

PISTON AND CONNECTING ROD

PISTON WITH RINGS, PISTON PIN AND LOCK RINGS	A853	1
PISTON WITH PISTON PIN AND LOCK RINGS	A860	1
PISTON, RINGS AND CONNECTING ROD (assembled)	A538	1
PISTON WITH RINGS	A539	1
Piston Ring	F4200	5
Piston	A540	1
CONNECTING ROD (complete)	A541	1
Shim (connecting rod)	F4734	2
Cap Screw (connecting rod)	A545	2
Cap Screw Washer (connecting rod)	A544	2
Lock Wire (connecting rod)	F3054	7"
Piston Pin	A546	1
Lock Ring (piston pin)	A547	2

CYLINDER AND CRANKCASE

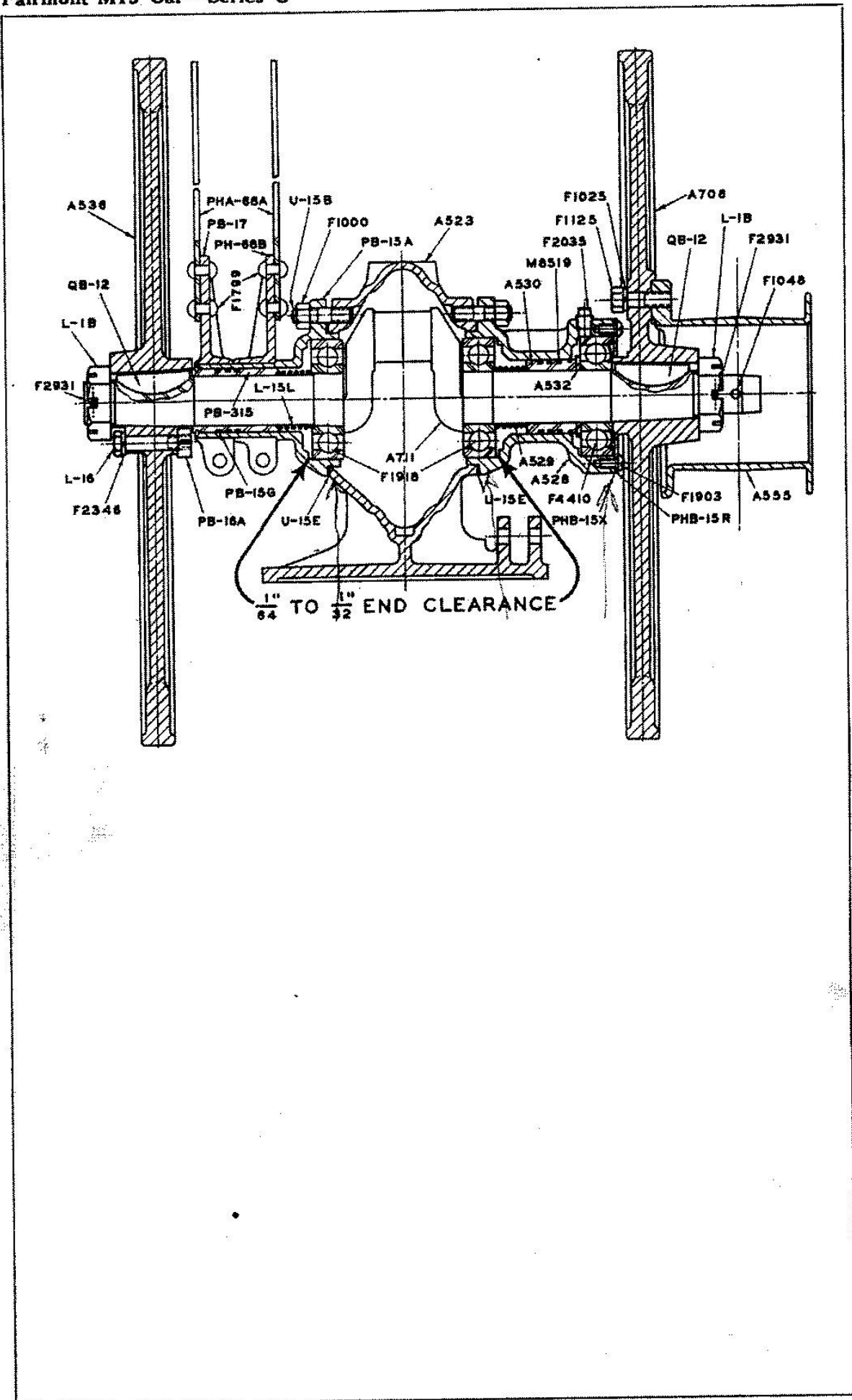
CYLINDER AND CRANKCASE WITH STUDS	A764	1
CYLINDER AND CRANKCASE WITH THROTTLE VALVE	A522	1
CYL. AND CRANKCASE WITH STUDS AND THROTTLE VALVE	A765	1
Cylinder and Crankcase	A523	1
Stud (side bearing)	U-15B	8
Stud (cylinder head)	A554	6
Stud (carburetor)	D-65B	2
Throttle Valve	PH-20	1
Guide (throttle valve)	Q-21	1
Cover (throttle valve)	QH-21A	1
Screw (throttle guide and cover)	F1903	4
Screw (throttle stop)	F1012	1
Gasket (throttle guide and cover)	P-21D	2
Packing (throttle stem)	QB-21F	1
Packing Cup (throttle)	QB-21E	1
THROTTLE ARM, SCREW AND NUT	TF-268-2	1
Throttle Valve Arm	TF-68E	1
Screw (throttle valve arm)	F1012	1
Nut (throttle valve arm screw)	F1011	1
Priming Cup	F1741	1
Drain Cock (crankcase)	F1022	1
Cylinder Head	A549	1
Gasket (cylinder head)	A548	1
Nut (cylinder head stud)	A524	6
Gasket (carburetor to crankcase)	D-47D	1
Nut (carburetor stud)	F1040	2
Muffler	A638	1
Machine Bolt 3/8 x 1½ (muffler—not ill.)	F1024	2
Lock Washer 3/8 (muffler bolt—not ill.)	F1025	2
Nut 3/8 hex (muffler bolt—not ill.)	F1000	2

WATER JACKET AND COOLING SYSTEM

WATER JACKET (with flanged elbow)	A550	1
Water Jacket (bare)	A551	1
Cock (water level)	F1022	1
Stud 5/16 x 1-1/8	B455	2
Gasket (elbow—not ill.)	A534	1
Elbow (for condenser hose)	A535	1
Nut 5/16	F1451	2
Lock Washer 5/16	F1100	2
Stud 3/8 x 1-5/8	PN-8A	4
Gasket (jacket to cylinder)	A557	1
Nut (water jacket stud)	F1000	4
Lock Washer (water jacket stud)	F1025	4
Name Plate (not ill.)	F3607	1
Pin (name plate—not ill.)	F1013	4
Guard Rail (for condenser—ill. with housing on page 50)	M14886	1

NOTE—Late cars have condenser filler caps of the bayonet type, while early ones were of the screw thread type. When ordering, select proper cap.

CONDENSER (with bayonet type cap)	M15476	1
FILLER CAP (bayonet type)	F5115	1
Gasket (filler cap)	A406	1
Filler Cap (screw thread type—for early cars)	F3301	1
Machine Bolt 5/16 x 3/4	F1489	4
Lock Washer 5/16	F1100	4
Pipe Nipple 3/8	F1331	1
Pipe Tee 3/8	F2691	1
Drain Cock (water jacket)	F1023	1
Hose Nipple 3/8	M15475	2
Hose 1¼ (for steam)	F4231	19"
Hose Clamp 1¼	F1854	2
Hose 5/8 (for return)	F2625	22"
Hose Clamp 5/8	F2666	2
Overflow Hose (not ill.)	F3006	16"



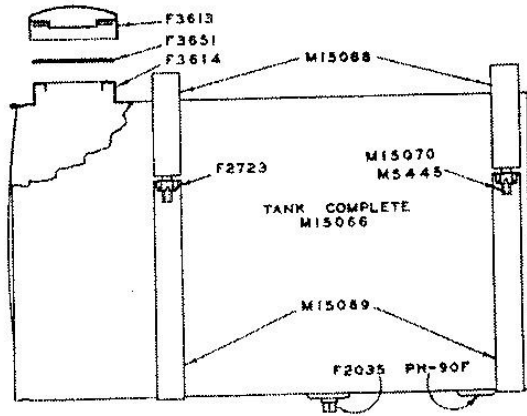
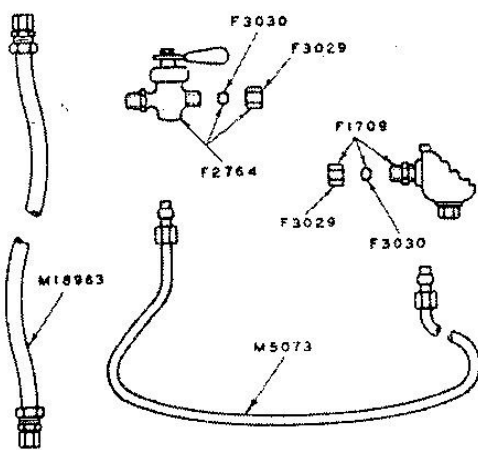
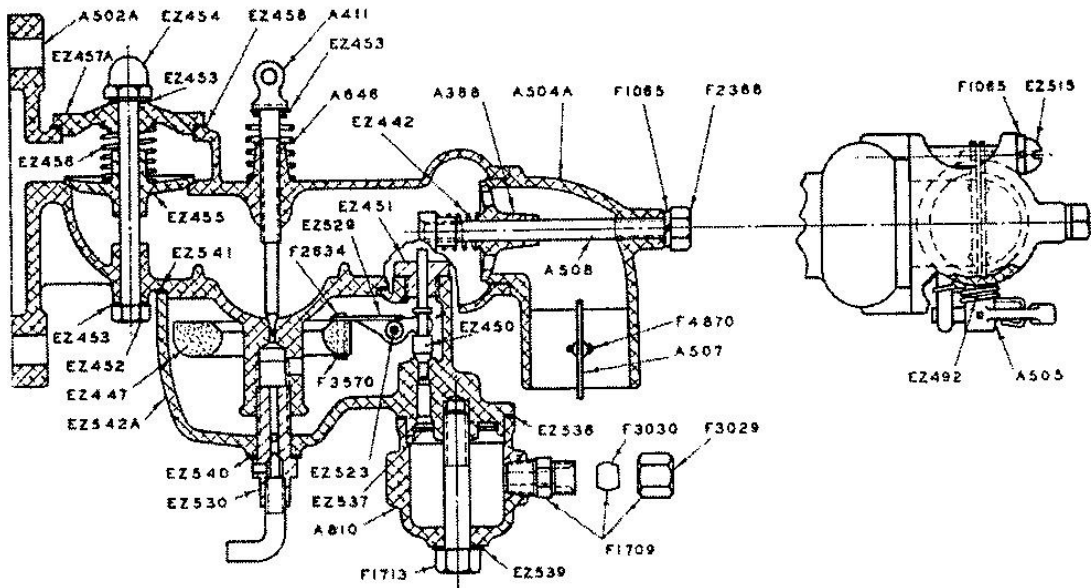
FLYWHEELS—CRANKSHAFT—SIDE BEARINGS

NOTE—For engines No. 45367 and higher order belt flywheel A706 and crankshaft A711. Earlier engines were fitted with belt flywheel A537 and crankshaft A527. Separate parts should not be interchanged between the two groups. We recommend application of A706 and A711, together when belt flywheel or crankshaft is needed for earlier engines.

Flywheel (timer or magneto side)	A536	1
Flywheel (belt side—see note)	A706	1
Flywheel (belt side—see note)	A537	1
Key (flywheel)	QB-12	2
Nut (flywheel)	L-1B	2
Cotter (flywheel nut)	F2931	2
CRANKSHAFT WITH BALL BEARINGS (see note)	A712	1
Crankshaft (see note)	A711	1
Ball Bearing	F1918	2
CRANKSHAFT WITH BALL BEARINGS (see note)	A526	1
Crankshaft (see note)	A527	1
Ball Bearing	F1918	2
Ball Bearing (outboard)	F4410	1
Gasket (side bearing)	U-15E	2
Stud (side bearing)	U-15B	8
Nut (side bearing stud)	F1000	8
Side Bearing (timer side)	PB-15A	1
PACKING SLEEVE WITH RINGS (timer side)	PB-315	1
Packing Ring (timer side)	PB-15G	3
Spacer Spring (timer side)	L-15L	1
Side Bearing (belt side)	A528	1
Pipe Plug (belt side bearing)	F2035	1
PACKING SLEEVE WITH RINGS (belt side)	A530	1
Packing Ring (belt side)	M8519	3
Spacer Spring (belt side)	A529	1
Washer (outboard bearing)	A532	1
Cover (belt side bearing)	PHB-15R	1
Gasket (cover)	PHB-15X	1
Screw (cover)	F1903	4

STARTING CRANK

Pin (starting crank)	F1048	1
Starting Crank (ill. on page 4)	M16420	1
Steady Bearing (starting crank—ill. on page 48)	M14940	1
Machine Bolt 5/16 x 1	F1099	2
Lock Washer 5/16	F1100	2

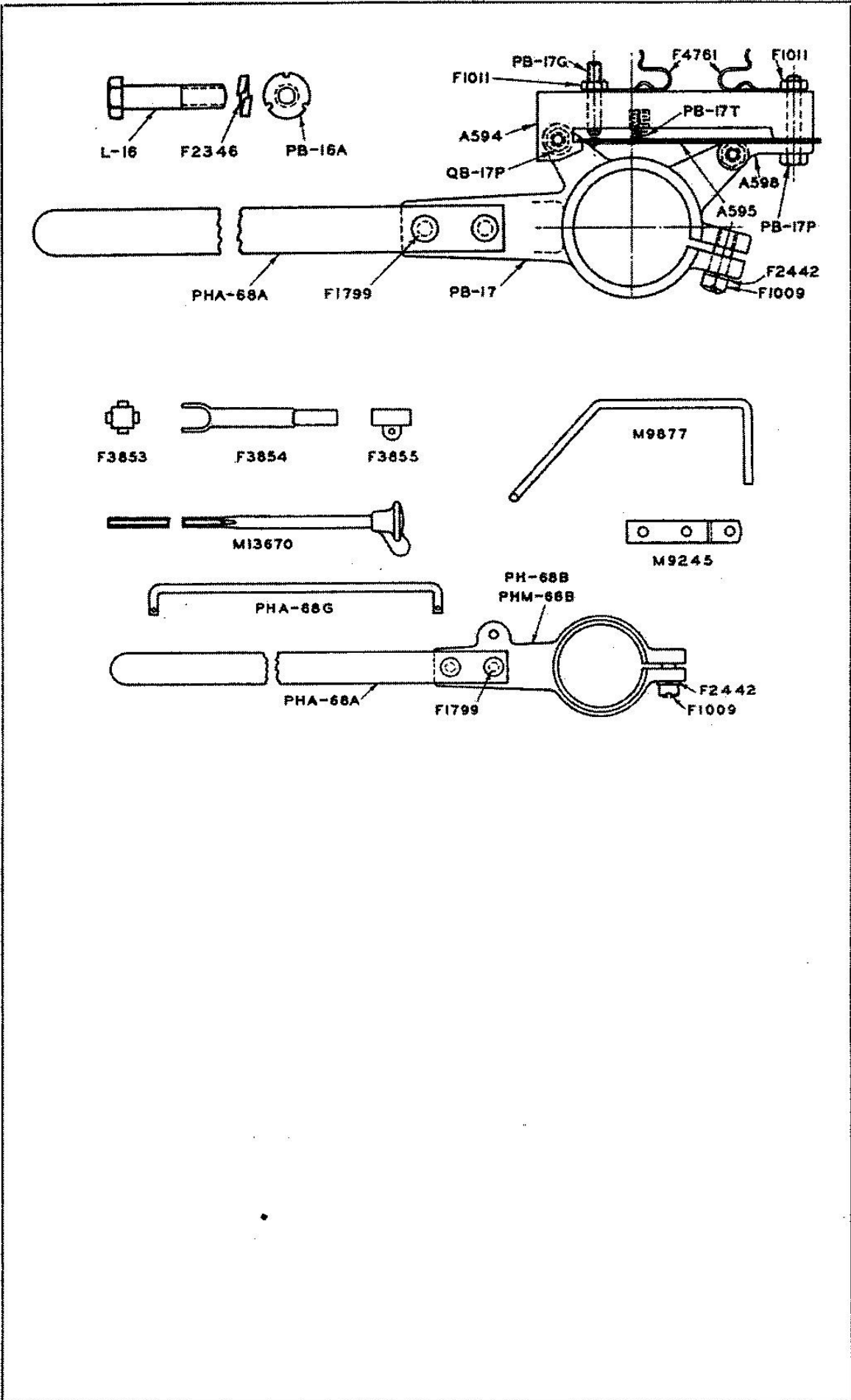


FUEL SYSTEM

FUEL TANK (with cap)	M15066	1
Bushing (solders in tank)	PH-90F	2
Bayonet Catch (neck for F3613, solders in tank)	F3614	1
FILLER CAP (bayonet type)	F3613	1
Gasket (filler cap)	F3651	1
Pipe Plug 1/8" (fuel tank drain)	F2035	1
Saddle (fuel tank)	M15068	2
Strap (fuel tank)	M15069	2
Bolt (fuel tank strap)	M5445	3
Bolt (fuel tank strap—flat head)	M15070	1
Nut 1/4" slotted (strap bolt)	F2723	4
Cotter 1/8x3/8" (strap bolt—not ill.)	F1450	4
Fuel Pipe	M5073	1
Shutoff Valve (includes F3029 and F3030)	F2764	1
CONNECTOR (includes F3029 and F3030)	F1709	1
Compression Nut	F3029	1
Compression Sleeve	F3030	1
Flexible Fuel Line (special—used in place of M5073)	M18963	1

CARBURETOR

Gasket (carburetor to crankcase—ill. page 28)	D-47D	1
Nut (carburetor stud—ill. page 28)	F1040	2
CARBURETOR (complete)	A642	1
Carburetor Body	A502A	1
Carburetor Bowl	EZ542A	1
Gasket (bowl to body)	EZ541	1
Drain Cock (complete)	EZ530	1
Gasket (drain cock)	EZ540	1
CORK FLOAT WITH LEVER	EZ528	1
Float	EZ447	1
Float Lever with Bearing	EZ529	1
Washer (float screw—not ill.)	EZ526	1
Float Screw	F2634	2
Float Screw Nut	F3570	2
Float Lever Pin	EZ523	1
Float Valve	EZ450	1
Guide (float valve)	EZ451	1
Check Valve Stem with Lower Nut	EZ452	1
Gasket (check valve stem)	EZ453	2
Check Valve Stem Nut (upper)	EZ454	1
Check Valve	EZ455	1
Spring (check valve)	EZ456	1
Cover (check valve)	EZ457A	1
Gasket (check valve cover)	EZ458	1
Needle Valve	A411	1
Friction Washer (needle valve)	EZ453	1
Friction Spring (needle valve)	A646	1
AIR VALVE CAGE WITH CHOKE	A503A	1
Cage (air valve)	A504A	1
Stem (air valve)	A508	1
Spring (air valve)	EZ442	1
Air Valve	A388	1
Lock Washer $\frac{1}{4}$ " (air valve stem)	F1065	1
Nut (air valve stem)	F2368	1
Choke Arm and Shaft	A505	1
Choke Spring	EZ492	1
Choke Disc	A507	1
Choke Disc Screw (self tapping)	F4870	2
Screw (air valve cage)	EZ515	2
Lock Washer $\frac{1}{4}$ " (air valve cage screw)	F1065	2
STRAINER BOWL (includes connector)	A810	1
CONNECTOR (includes F3029 and F3030)	F1709	1
Screen (strainer)	EZ537	1
Gasket (strainer bowl)	EZ538	1
Cap Screw (strainer bowl)	F1713	1
Gasket (strainer bowl screw)	EZ539	1



TIMER

Wiping Block	PB-16A	1
Bolt (wiping block)	L-16	1
Lock Washer $\frac{3}{8}$	F2346	1
TIMER COMPLETE	A355	1
TIMER LEVER (assembled)	A662	1
Timer Casting	PB-17	1
Handle (only)	PHA-68A	1
Rivet $\frac{1}{4} \times \frac{1}{2}$	F1799	2
Clamp Screw	F1009	1
Lock Washer $\frac{3}{8}$	F2442	1
TIMER BLOCK WITH POINTS	A598	1
Timer Block	A594	1
Timer Blade (with point)	A595	1
Spring (timer blade)	PB-17T	1
Ground Block	A598	1
Screw (timer blade)	PB-17P	1
Nut (timer screw)	F1011	2
Connector	F4761	2
Adjusting Screw (with point)	PB-17G	1
Mounting Screw (timer)	QB-17P	2

CARBURETOR CONTROL

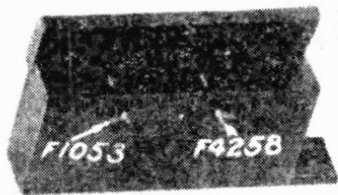
Universal Spider	F3853	1
Adjustable Rod Sleeve	F3854	1
Adjusting Rod	M13670	1
Choke Sleeve	F3855	1
Choke Wire (not ill.)	F3054	11"

THROTTLE CONTROL

THROTTLE LEVER (complete—battery engines only)	PHA-268	1
Casting (only—width $1\frac{1}{8}$ ")	PH-68B	1
THROTTLE LEVER (complete—magneto engines only)	PHMA-268	1
Casting (only—width $\frac{3}{8}$ ")	PHM-68B	1
Handle	PHA-68A	1
Rivet $\frac{1}{4} \times \frac{1}{2}$	F1799	2
Clamp Screw	F1009	1
Lock Washer $\frac{3}{8}$	F2442	1
Throttle Rod	PHA-68G	1
Cotter $\frac{3}{16} \times \frac{1}{2}$	F1027	2

MAGNETO CONTROL PARTS

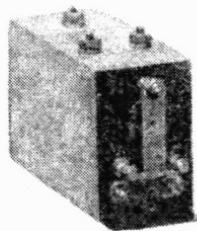
Support Clip (control rod—Bosch)	M9245	1
Control Rod (Bosch)	M9877	1
Support Bracket (control rod—Eisemann—not ill.)	M19104	1
Control Rod (Eisemann—not ill.)	M19105	1
Machine Screw 12-24x $\frac{3}{4}$	F1008	
Nut 12-24	F1011	
Cotter $\frac{3}{16} \times \frac{1}{2}$	F1027	



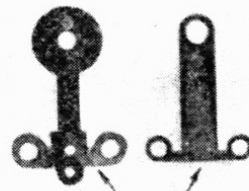
M16490



F1081



F4756



F4166



M2314



F5730



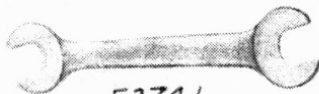
C-48



F1421



M6738



F3741



F2950



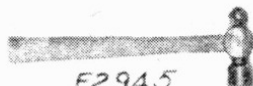
F2947



F2952



F2948



F2945



F2951



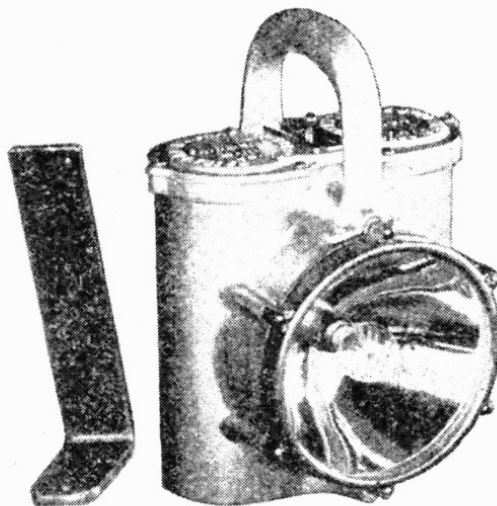
F2966



F4413



F2946



BATTERY IGNITION EQUIPMENT

NOTE—Late cars have coil and batteries in the same box, while early ones had coil in tool box and a shorter battery box. The improved box M16490 is applicable to early cars by following instructions sent with it.

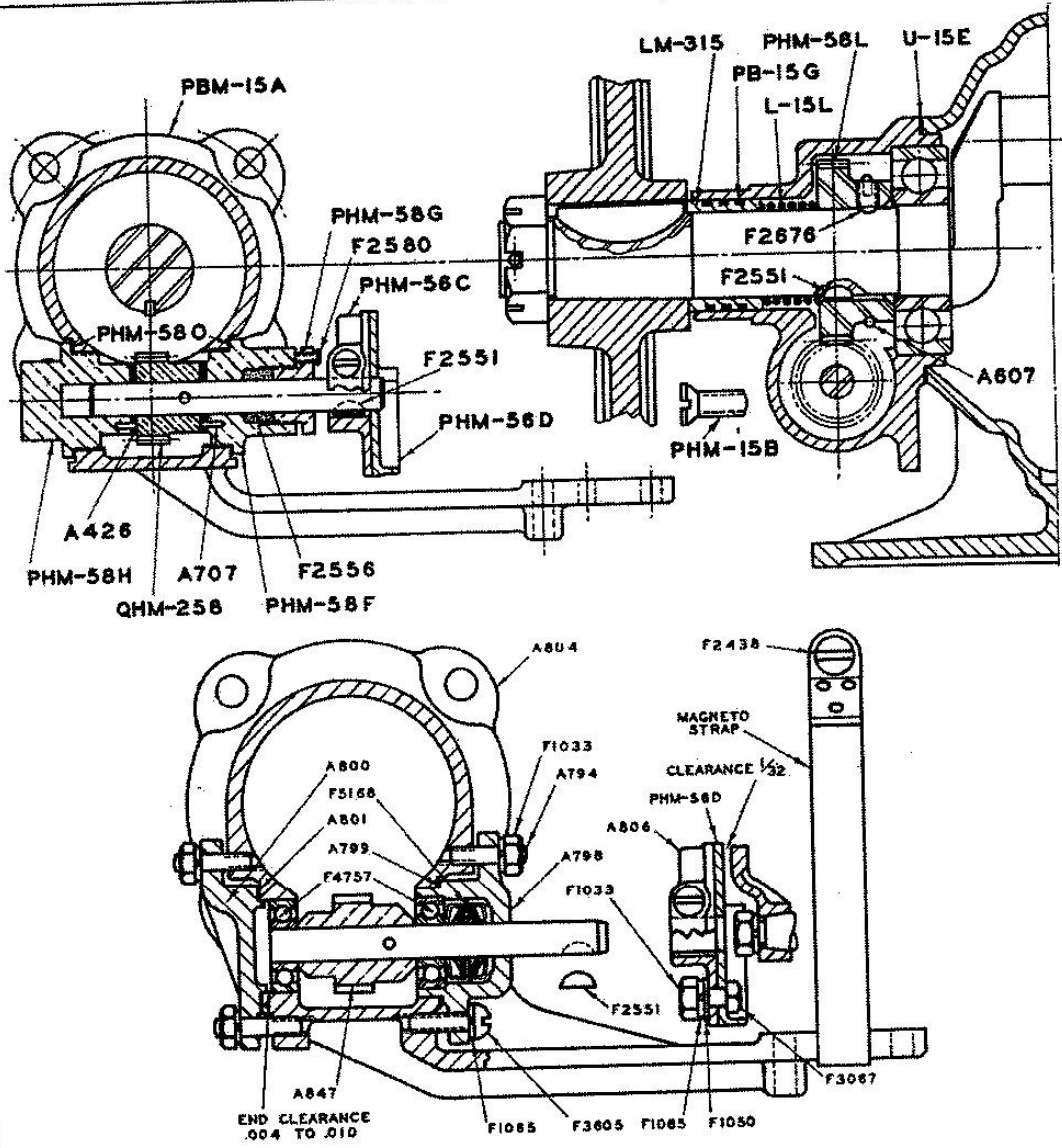
BATTERY BOX (with coil spacer)	M16490	1
Battery Box (less cover)	M16489	1
Cover (battery box)	M16496	1
Coil Spacer	M16495	1
Clamp Bolt	F4258	2
Wing Nut (clamp bolt)	F1053	2
Step Bolt 1/4 x 7/8 (holds battery box)	F2610	2
Lock Washer 1/4	F1065	2
Dry Cell	F1081	4
Spark Coil (F3419 without bracket)	F4756	1
Vibrator (both points included)	F4166	1
Connector (battery)	M2314	3
Spark Plug	F5730	1
Spark Plug Wire (with terminals)	M16492	1
Switch	F1421	1
Wood Screw No. 6x3/4	F1082	2
Wire (switch to timer—23")	M17112	1
Wire (switch to coil—49")	M16493	1
Wire (battery to timer—72")	M16491	1
Wire (coil to battery—13")	M16642	1
Cable Clip (fiber)	C-48	3
Wood Screw No. 9x5/8	F1387	2
Nut 1/4 stove bolt	F2712	1
Washer 3/16	F1050	3
High Tension Wire (per foot)	F1402	
Primary Wire (per foot)	F2958	

HEADLIGHT

HEADLIGHT (with bracket and bolts)	M8404	
Mounting Bracket	M8403	
Headlight Bulb	F3300	
Reflector	F403	
Lamp Socket with Wires	F405	
Dry Cell	F1081	
LENS and CLAMP RING (cemented together)	F4179	
Lens	F400	
Clamp Ring	F402	
Lens Gasket (copper asbestos)	F401	
Switch	F404	
Handle with Screws	F4180	

TOOLS

TOOL KIT (in bag)	M16354	1
Draw String Bag	M6738	1
Ball Pein Hammer	F2945	1
6" Pliers	F2946	1
3" Screw Driver	F2948	1
Connecting Rod Socket Wrench	F4413	1
End Wrench 1 1/8 x 1/2	F2950	1
End Wrench 1 1/8 x 5/8	F2951	1
End Wrench 3/4 x 1 1/4	F2952	1
Oil Can	F2966	1
End Wrench 7/8 x 1	F3741	1
9" Adjustable Wrench	F2947	1



(Continued from page 39.)

MAGNETO INSTALLATION PARTS
(for all plain and ball bearing drives)

Eisemann Magneto (not ill.)	F5324	1
Magneto Strap (Eisemann)	A864	1
Bosch Magneto (not ill.)	F3271	1
Magneto Strap (Bosch)	PH-293	1
Drive Arm (Bosch or Eisemann)	PHM-56H	1
Wico Magneto LD1 (not ill.)	F4937	1
Magneto Strap (Wico LD1—not ill.)	A732	1
Slotted Drive Disc (Wico LD1—not ill.)	F4938	1
Dowel Pin (Wico LD1—not ill.)	A731	1
Clamp Screw (all magneto straps)	F2438	1
Cap Screw 1/4 x 3/4 (holds magneto—not ill.)	F1064	3
Cap Screw 1/4 x 1 1/2 (holds magneto—not ill.)	F2608	1
Clamp Screw (all drive discs)	F1009	
Cap Screw 1/4 x 5/8	F3067	
Wrot Washer 3/16	F1050	
Nut 1/4	F1033	
Lock Washer 1/4	F1065	
Lock Washer 3/8	F1100	
Lock Washer 3/8	F1025	

NOTE—Engines below No. 45800 had plain bearing magneto drive shafts, while later ones have shafts mounted in ball bearings. The ball bearing group can be applied to earlier engines, by ordering assembly A803, F2551 key, and either the A805 or A807 coupling.

BALL BEARING MAGNETO DRIVE

SIDE BEARING with DRIVE SHAFT (assembled)	A803	1
Side Bearing (ball bearing drive)	A804	1
DRIVE SHAFT with GEAR and BALL BEARINGS	A795	1
Drive Shaft with Gear	A847	1
Ball Bearing	F4757	2
Cover (closed)	A800	1
Gasket (for closed cover)	A801	1
Cover (for oil seal)	A798	1
Gasket (for oil seal cover)	A799	1
Oil Seal	F5168	2
Cover Stud	A794	3
Nut $\frac{1}{4}$	F1033	3
Screw $\frac{1}{4} \times \frac{3}{4}$	F3605	1
Lock Washer $\frac{1}{4}$	F1065	4
MAGNETO COUPLING (assembled) (Bosch or Eisemann)	A805	1
Drive Disc (with screw)	A806	1
Driving Gap	PHM-56D	1
MAGNETO COUPLING (assembled) (Wico LD1—not ill.)	A807	1
Drive Disc (with screw)	A806	1
Drive Plate (with studs—not ill.)	A719	1

PLAIN BEARING MAGNETO DRIVE

NOTE—Side bearing PBM-15A for the plain bearing magneto drive is no longer furnished, but all parts listed below are available. When a PBM-15A side bearing is required, order assembly A803, F2551 key, and either the A805 or A807 coupling.

Drive Shaft with Gear	QHM-258	1
Gasket (drive shaft bearing)	PHM-58O	2
DRIVE SHAFT BEARING (closed end)	PHM-58H	1
DRIVE SHAFT BEARING (for packing)	PHM-58F	1
Thrust Washer	A426	2
Pin (thrust washer)	A707	6
Packing (preformed metallic)	F2556	1
Packing Nut	PHM-58G	1
Lock Screw (packing nut)	F2580	1
MAGNETO COUPLING (assembled) (Bosch or Eisemann)	PHM-256	1
Drive Disc (with screw)	PHM-56C	1
Driving Gap	PHM-56D	1
MAGNETO COUPLING (assembled) (Wico LD1—not ill.)	A726	1
Drive Disc (with screw)	PHM-56C	1
Drive Plate (not ill.)	A719	1

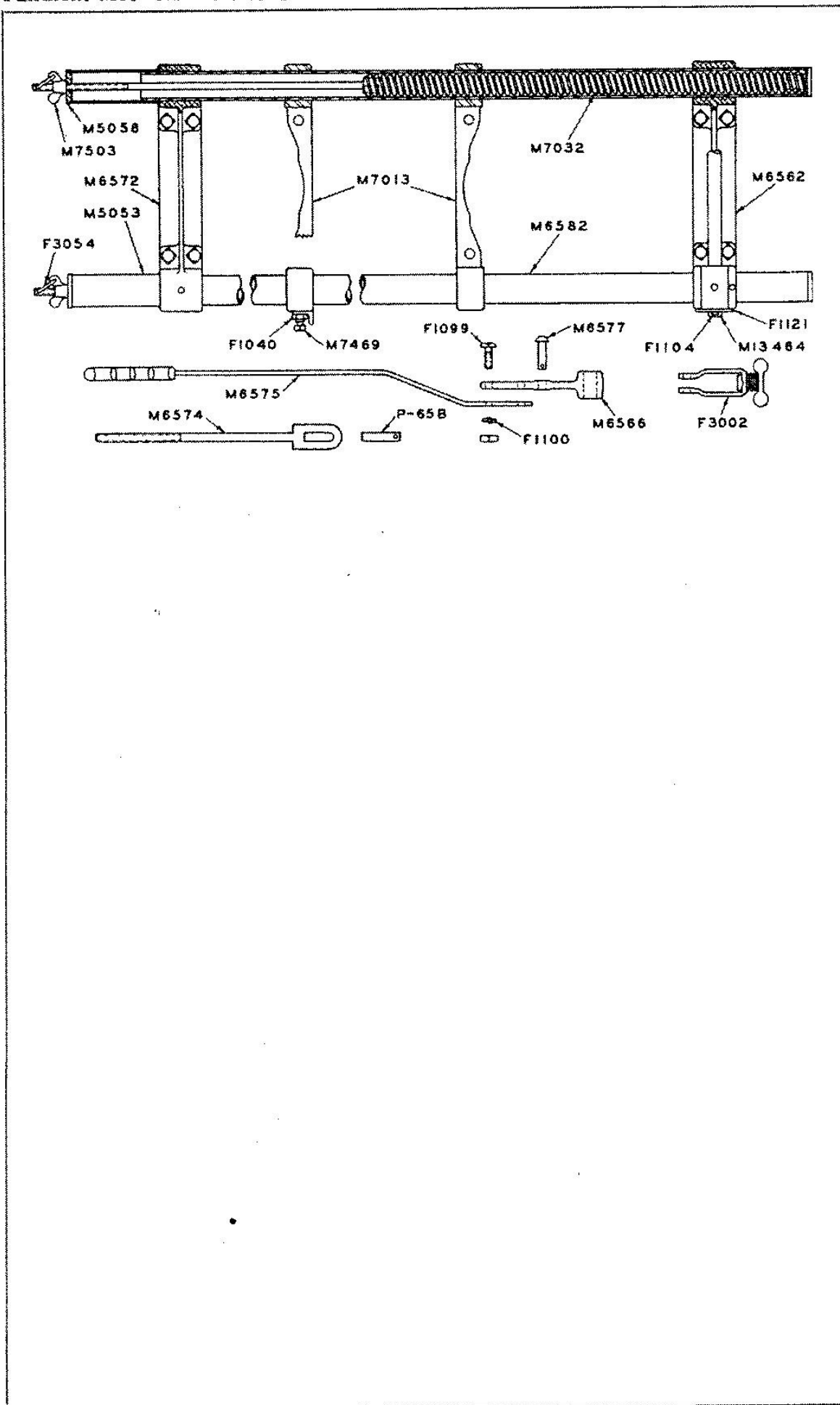
MAGNETO INSTALLATION PARTS

(for all plain and ball bearing drives)

NOTE.—For magneto spare parts see bulletin 202.

Crankshaft Gear	PHM-58L	1
Gear Set Screw	F2676	1
Lock Ring	A607	1
Key	F2551	2
Set Screw Wrench (not ill.)	F3032	1
Flat Head Screw $\frac{3}{8} \times 1$	PHM-15B	2
PACKING SLEEVE with RINGS	LM-315	1
Packing Ring	PB-15G	3

(Continued at bottom of page 38.)



SLIDING BASE

Bearing (sliding base—front)	M6572	1
Bearing (sliding base—rear)	M6562	1
Machine Bolt $\frac{3}{8}$ x $1\frac{1}{2}$	F1024	6
Machine Bolt $\frac{3}{8}$ x $4\frac{1}{2}$	F2690	2
Support Tube (engine)	M6582	2
Engine Support	M7013	2
Set Screw $\frac{3}{8}$ x 1 (special)	M7469	4
Nut $\frac{3}{8}$	F1040	4
Tension Spring Assembly (parts not sold separately)	M7032	2
Tension Tube (front)	M5053	2
Tube End (front cover)	M5058	2
Wing Nut (tension spring)	M7503	2
Lock Wire	F3054	1 ft.
Pull Rod (sliding base)	M6574	1
Pin (pull rod)	P-65B	1
Adjuster (pull rod—yoke and wing nut)	F3002	1
Pin (pull rod adjuster)	M6577	1
Shaft (sliding base lever)	M13464	1
Wrot Washer $\frac{5}{8}$	F1121	2
Socket (sliding base lever)	M6566	1
Lever (sliding base)	M6575	1
Machine Bolt $\frac{1}{8}$ x 1	F1099	2
Cotter $\frac{1}{8}$ x 1	F1104	3
Cotter $\frac{3}{8}$ x 1	F1882	1
Lock Washer $\frac{3}{8}$	F1025	8
Lock Washer $\frac{1}{8}$	F1100	2

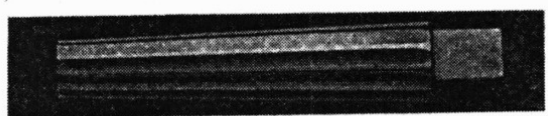
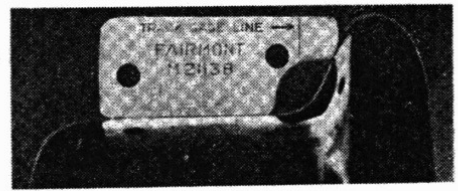
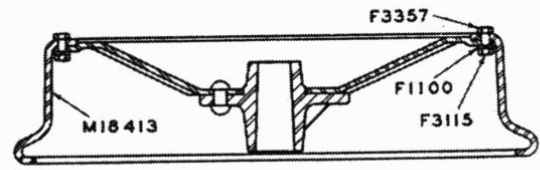
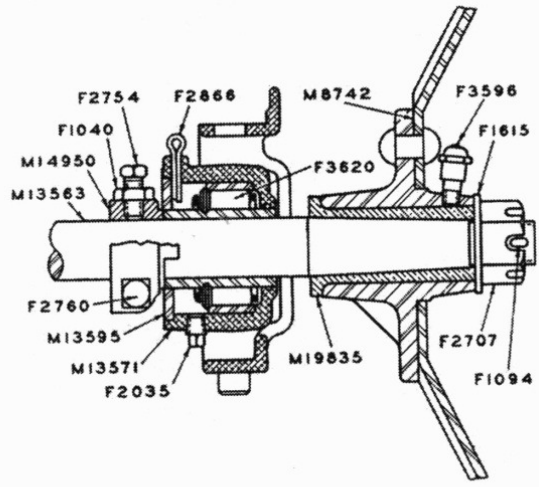
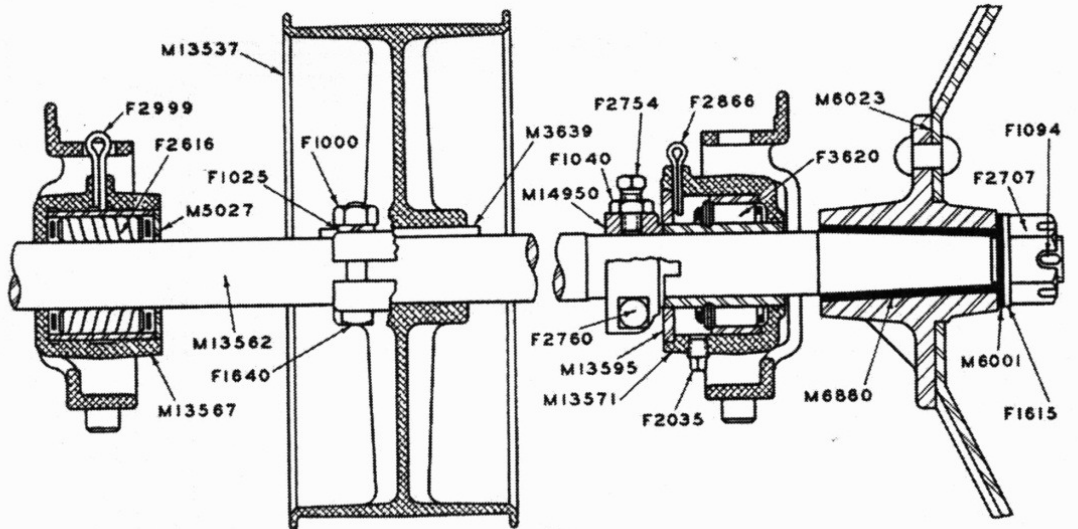
ENGINE AND MOUNTING

Engine (battery)	O	
Engine (magneto)	OM	
Machine Bolt $\frac{1}{8}$ x $1\frac{1}{2}$	F1428	4
Nut $\frac{1}{8}$ (hex)	F1029	4
Lock Washer $\frac{1}{8}$	F4160	4

BELT—PULLEYS

NOTE—For illustrations of axle pulley parts see page 42, and engine pulley parts page 30.

Endless Cord Belt 3x62" (ill. on page 48)	F3000	1
Engine Pulley 4"	A555	1
Cap Screw (use F1025 lock washer)	F1125	3
AXLE PULLEY (with bolts)	M13536	1
Axle Pulley (less bolts)	M13537	1
Machine Bolt $\frac{3}{8}$ x 2 (use F1025 lock washer)	F1640	4
Nut $\frac{3}{8}$ hex	F1000	4
Drive Key (axle pulley)	M3639	1



For axle bearing parts, see pages 44, 45.

AXLES—THRUST COLLARS

Drive Axle	M13562	1
Loose Axle	M13563	1
Axle End Nut	F2707	4
Cotter (Axle end nut)	F1094	4
THRUST COLLAR 1$\frac{3}{8}$" (complete)	M14949	4
Thrust Collar	M14950	4
Clamp Bolt (thrust collar)	F2760	4
Lock Washer $\frac{3}{8}$	F1025	4
Set Screw (thrust collar)	F2754	4
Nut $\frac{3}{8}$ half	F1040	4

WHEELS—INSULATION—LOOSE WHEEL BUSHING

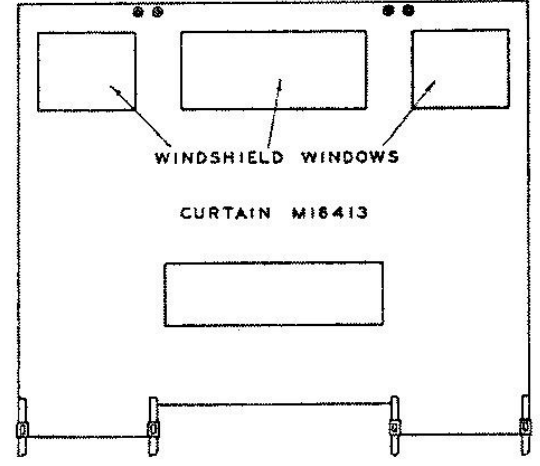
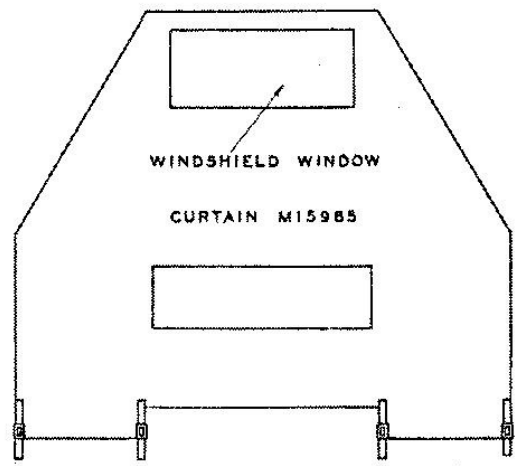
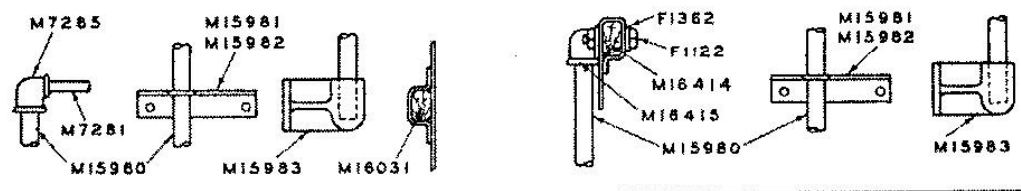
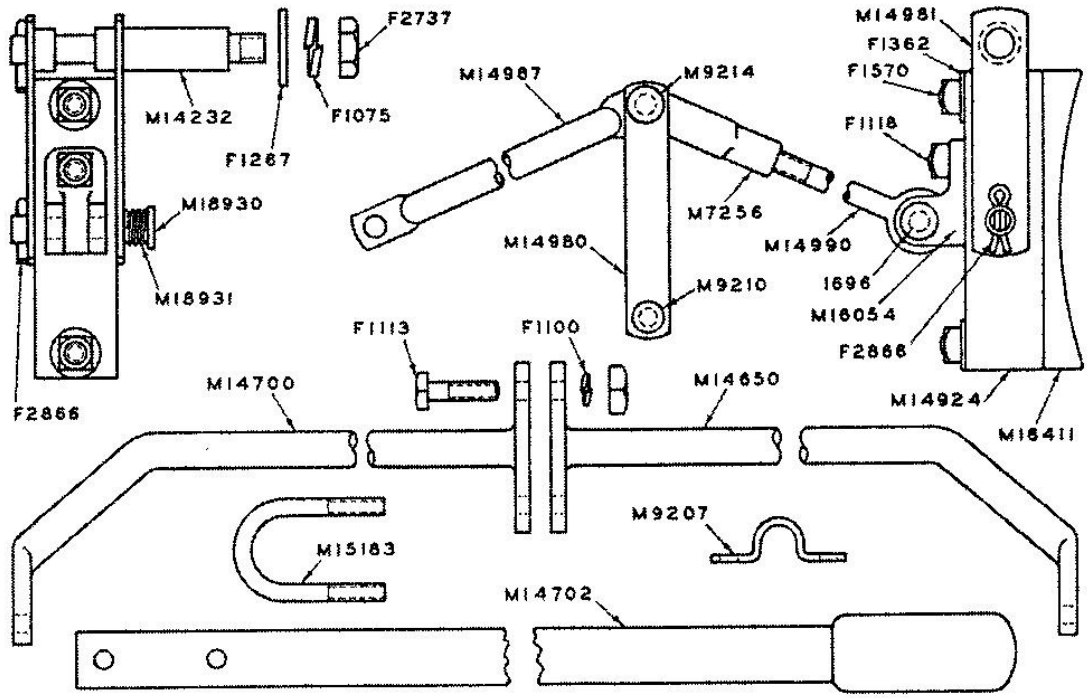
NOTE.—Complete wheels, and hub and disc assemblies, do not include insulation or loose wheel bushing. Always order extra, if required.

17"x $\frac{1}{4}$ " TWO PIECE WHEEL (taper bored for insulation)	M19866	3
Hub and Disc (taper bored for insulation)	M6023	3
17"x $\frac{1}{4}$ " TWO PIECE WHEEL (loose—straight bored)	M19868	1
Hub and Disc (straight bored—with oiler)	M8742	1
Oiler (for loose wheel)	F3596	1
17"x $\frac{1}{4}$ " Wheel Tire	M18413	4
TIRE BOLT SET (12 each bolt, nut, lock washer)	M19874	4
Tire Bolt (heat treated)	F3357	48
Lock Washer $\frac{5}{8}$	F1100	48
Nut $\frac{5}{8}$ hex SAE	F3115	48
INSULATION 1$\frac{3}{8}$" (complete)	M6334	3
Insulating Bushing	M6880	3
Insulating Washer	M6001	3
Steel Washer	F1615	3
Loose Wheel Bushing (filleted shoulder—late cars)	M19835	1
Loose Wheel Bushing (square shoulder—early cars—not ill.)	M8697	1
Washer (steel—loose wheel)	F1615	1
Taper Hand Reamer (for wheels and insulation)	M7666	
Shock Wheel Puller (for pulling wheels—not ill.)	M8705	
Wheel Gauge (for checking wheel gauge)	M21138	

Intentional Blank Page
Pages 44 and 45 are missing.

Intentional Blank Page
Pages 44 and 45 are missing.

Speeder



BRAKE

NOTE—Each brake shoe on late cars is firmly held between the hanger links by a friction spring and long hanger pin. These parts are applicable to early cars which used plain short hanger pins without springs. Order one each of M18930, M18931, and F2866 cotter for each shoe.

A few early cars had asbestos lined brake shoes, but these have been superseded with metal lined ones, which are interchangeable.

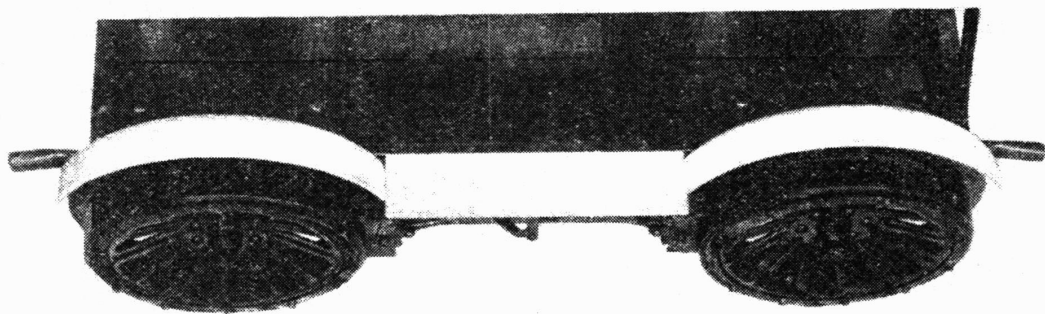
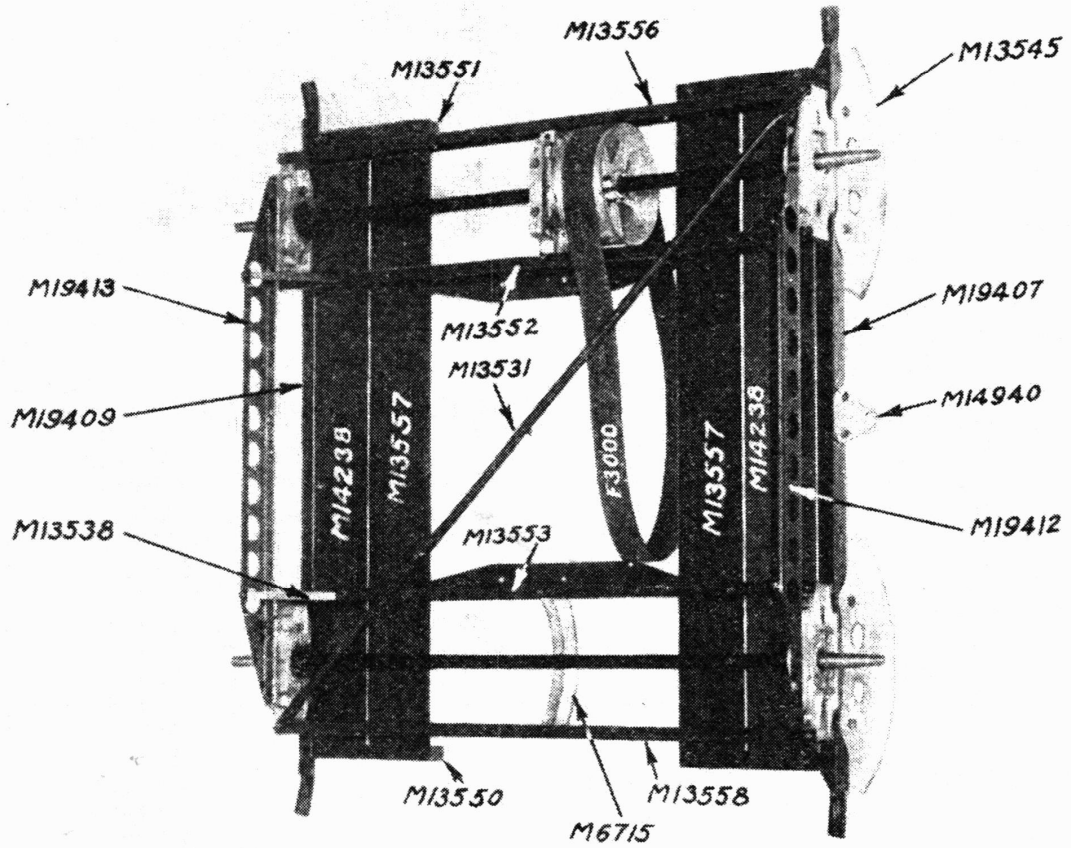
Brake Lever (with grip)	M14702	1
Brake Shaft (right half)	M14650	1
Brake Shaft (left half)	M14700	1
Machine Bolt $\frac{1}{8}$ x $1\frac{1}{4}$	F1113	2
Bearing (center—U Bolt)	M15183	1
Nut $\frac{1}{8}$	F1114	4
Bearing (outer)	M9207	2
Machine Bolt $\frac{1}{8}$ x $\frac{3}{4}$	F1489	4
Link (toggle)	M14980	4
Pin (toggle link— $\frac{1}{8}$ x $\frac{5}{8}$)	M9210	2
Pin (toggle arm to link— $\frac{3}{8}$ x $1\frac{1}{4}$)	M9214	2
Pivot Stud	M14232	4
Lock Washer $\frac{1}{2}$	F1075	4
Wrot Washer $\frac{1}{2}$	F1267	4
Nut $\frac{1}{2}$ hex	F2737	4
Toggle (non adjustable)	M14987	2
ADJUSTABLE TOGGLE (assembled)	M14988	2
Yoke	M7256	2
Eye Bolt	M14990	2
BRAKE SHOE WITH LINER (assembled)	M16432	4
Brake Shoe (block only)	M14924	4
Claw	M16054	4
Carriage Bolt $\frac{1}{8}$ x $1\frac{1}{2}$	F1118	4
Liner	M16411	4
Machine Bolt $\frac{1}{8}$ x $1\frac{3}{4}$	F1570	8
Wrot Washer $\frac{1}{8}$	F1362	8
Pin (brake shoe claw)	1696	4
Shoe Hanger	M14981	8
Hanger Pin	M18930	4
Spring	M18931	4
Cotter $\frac{1}{8}$ x1	F2866	8
Cotter $\frac{1}{8}$ x $\frac{3}{4}$	F1030	6
Cotter $\frac{1}{2}$ x $\frac{3}{4}$	F1076	2
Lock Washer $\frac{1}{8}$	F1100	6

WINDSHIELDS

WINDSHIELD (complete—standard)	M15984	1
Windshield Curtain (with window)	M15985	1
Top Cross Bar	M7281	1
Top Socket	M7285	2
Cross Bar (center—wood)	M16031	1
WINDSHIELD (complete—wide three window)	M16412	1
Windshield Curtain (with windows)	M16413	1
Top Cross Bar	M16414	1
Top Socket	M16415	2
Machine Bolt $\frac{1}{8}$ x $1\frac{1}{2}$	F1122	4
Washer $\frac{1}{8}$ wrot	F1362	4

The following items are common to both groups.

Bracket (left—bolts to guard rail)	M15981	1
Bracket (right—bolts to guard rail)	M15982	1
Vertical Post	M15980	2
Lower Socket	M15983	2
Machine Bolt $\frac{1}{8}$ x1 (use eight F1100 lock washer)	F1099	8



FRAME AND DECK

NOTE—Side rails and rail skids used on cars below serial No. 138714 are no longer furnished, as these parts do not have clearance for the long bearing guides now standard. When using new style rail skids M19412 and M19413 with old installations having short guides, insert strips of thin sheet metal between rail skids and under side of bearing supports M13564 to close the openings. New style side rails M19407 and 19409 used with short guide installations must be equipped with protecting covers M19406.

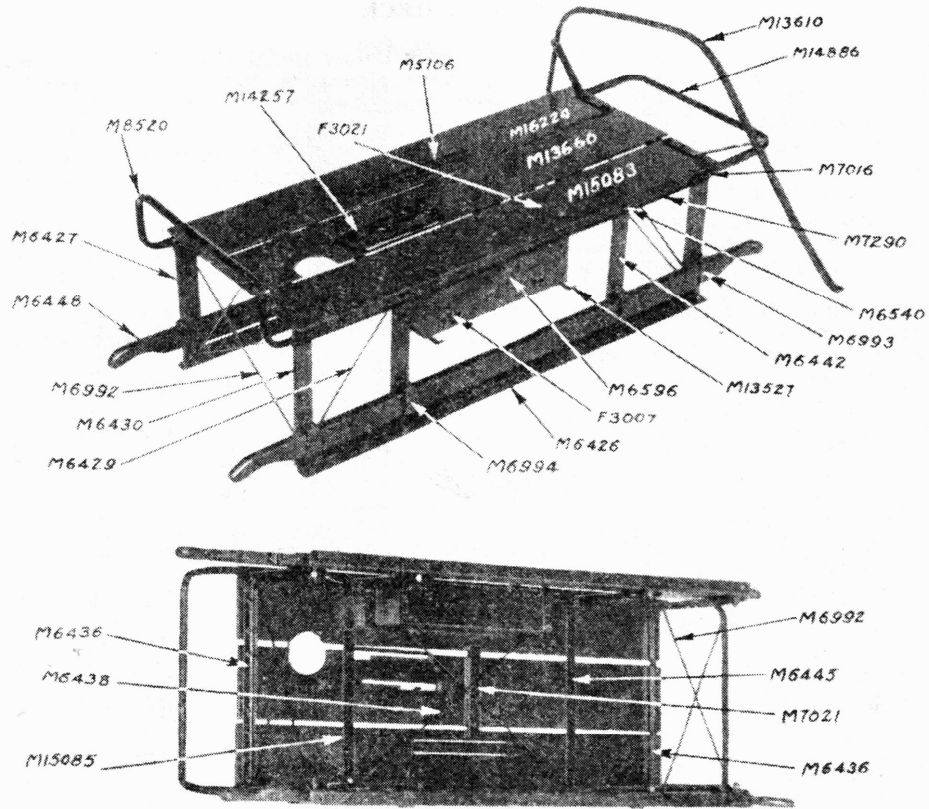
When applying long guide bearings to early cars, side rails and rail skids must either be cut away to provide clearance, or replaced with new style ones, and protecting covers used. Also see note under axle bearings on page 44.

Cross Channel No. 1 (no. from FRONT of car)	M13558	1
Cross Channel No. 2 (with engine support)	M13553	1
Cross Channel No. 3 (with engine support)	M13552	1
Cross Channel No. 4 (rear)	M13556	1
Front Center Casting	M6715	1
Sway Brace	M13531	1
Machine Bolt $\frac{3}{8}$ x 3 $\frac{1}{2}$	F1511	8
Machine Bolt $\frac{3}{8}$ x 3 $\frac{3}{4}$	F2721	2
Machine Bolt $\frac{3}{8}$ x 4 $\frac{1}{2}$	F2690	2
Machine Bolt $\frac{5}{8}$ x 1 $\frac{1}{2}$	F1122	2
Side Rail (right—with handles)	M19407	1
Side Rail (left—with handles)	M19409	1
Cover (bearing guide—illustrated on page 44)	M19406	8
Machine Bolt $\frac{3}{8}$ x 1 $\frac{1}{2}$	F1024	8
Wheel Guard	M13545	4
Machine Bolt $\frac{3}{8}$ x 1	F1159	8
Rail Skid (right)	M19412	1
Rail Skid (left)	M19413	1
Machine Bolt $\frac{3}{8}$ x 1 $\frac{1}{4}$	F1318	8
Brace (rail skid)	M13538	4
Machine Bolt $\frac{1}{2}$ x $\frac{3}{4}$	F1489	8
Deck Floor Board (inside)	M13557	2
Deck Floor Board (outside—notched)	M14238	2
Step Bolt $\frac{1}{2}$ x 1	F2872	16
Deck End Block (high)	M13550	3
Deck End Block (low)	M13551	1
Carriage Bolt $\frac{1}{2}$ x 4	F1867	6
Carriage Bolt $\frac{1}{2}$ x 2 $\frac{1}{2}$	F1108	2
Carriage Bolt $\frac{1}{2}$ x 3 $\frac{3}{4}$	F3076	1
Carriage Bolt $\frac{1}{2}$ x 2	F1101	1
Grip Washer (square) $\frac{1}{2}$	F3071	10
Wrot Washer $\frac{1}{2}$	F1362	8
Nut $\frac{1}{2}$	F1114	10
Lock Washer $\frac{1}{2}$	F1100	26
Lock Washer $\frac{3}{8}$	F1025	34
Steady Bearing (starting crank—listed with crank)	M14940	

WIDE WHEEL GUARDS AND STEP PLATES

NOTE—These parts can be supplied as extra equipment on new cars at the factory. Step plates can be applied in the field to standard series C cars with 17" wheels, by drilling four extra holes in each side rail. Wide wheel guards interchange with standard ones, no drilling required.

Wheel Guard (wide)	M16675	4
STEP PLATES (set of two with bolts)	M21273A	1
Step Plate (left)	M20859A	1
Step Plate (right)	M21274A	1
Machine Bolt $\frac{1}{2}$ x 1	F1099	8
Machine Bolt $\frac{1}{2}$ x 1 $\frac{1}{4}$	F1113	2
Lock Washer $\frac{1}{2}$	F1100	10



EXTENSION LIFT HANDLES

EXTENSION LIFT HANDLE (complete)	M7035	2
Handle (only)	M6448	2
Screw (flat head)	F1112	4
Wrot Washer $\frac{3}{8}$	F1115	4
Nut $\frac{3}{8}$ hex	F1040	4
Clip (handle)	M6472	4
Wood Screw No. 9 x 1	F2431	4

HOUSING

Outside Guide (lift handle)	M6993	4
Inside Guide (lift handle)	M6994	4
Machine Bolt $\frac{3}{8} \times \frac{3}{4}$	F2887	8
Safety Rail (front—complete with braces)	M13610	1
Machine Bolt $\frac{3}{8} \times 1$	F1099	4
Hand Rail (rear)	M8520	1
Machine Bolt $\frac{3}{8} \times 1$	F1159	2
Guard Rail (condenser—front)	M14886	1
Machine Bolt $\frac{3}{8} \times \frac{3}{4}$	F1489	2
Side Channel (lower)	M6426	2
Side Channel (top left—not ill.)	M6428	1
Side Channel (top right)	M7290	1
Vertical Channel (right front—left rear)	M6427	2
Vertical Channel (left front—right rear)	M6430	2
Vertical Channel (left middle—not ill.)	M7157	2
Vertical Channel (right middle)	M6442	2
Side Brace ($\frac{1}{4}$ rod)	M6429	4
End Brace ($\frac{1}{4}$ rod)	M6992	4
Diagonal Brace (top— $\frac{3}{16}$ rod)	M6438	2
Cross Strap (top—middle front)	M6445	1
Cross Strap (top—middle rear)	M15085	1
End Cross Angle (top—front and rear)	M6436	2
Bolt $\frac{1}{2} \times 1 \frac{3}{8}$ (SAE—drilled)	M6540	12
Bolt $\frac{1}{2} \times 1$ (SAE—drilled)	M7016	4
Wrot Washer $\frac{1}{2}$	F1267	4
Nut $\frac{1}{2}$ (SAE castle)	F1702	16
Cotter $\frac{3}{8} \times 1$	F1882	16
Seat Board (right)	M15083	1
Seat Board (middle)	M13666	1
Cleat (wood—middle seat board)	M7021	1
Wood Screw No. 9x1	F2431	2
Seat Board (left—for battery cars)	M16224	1
Seat Board (left—for magneto cars)	M15084	1
Step Bolt $\frac{1}{4} \times \frac{3}{4}$	F2906	14
Step Bolt $\frac{1}{4} \times \frac{7}{8}$	F2610	4
Guide (brake and sliding base levers)	M14257	1
Guide (throttle and timer levers)	M5106	2
Stove Bolt $\frac{1}{4} \times 1$ (flat head)	F3069	3
Stove Bolt $\frac{1}{4} \times 1$ (round head)	F1627	3
Stove Bolt $\frac{1}{4} \times 1 \frac{1}{2}$ (round head)	F1685	1
Wrot Washer $\frac{1}{4}$	F1106	7
Nut $\frac{1}{4}$ Stove Bolt	F2712	7
TOOL BOX (with cover)	M6592	1
Box (only)	M6594	1
COVER (with hinges)	M6596	1
Spring Hinge	F3007	2
Hasp (for tool box cover)	M7289	1
Rivet $\frac{3}{16} \times \frac{1}{4}$	F1793	2
Muzzle Snap (for tool box cover)	F3039	1
Step Bolt $\frac{1}{4} \times 8$	F3021	4
Bracket (starting crank)	M13527	2
Nut $\frac{1}{4}$	F2700	4
Guard (flywheel—not ill.)	M7036	1
Step Bolt $\frac{1}{4} \times \frac{3}{4}$	F2906	2
Lock Washer $\frac{1}{4}$	F1065	20
Lock Washer $\frac{3}{16}$	F1100	6
Lock Washer $\frac{3}{8}$	F1025	10
Chassis Bolt $\frac{3}{8} \times \frac{3}{4}$ (drilled—housing to frame)	M7187	8
Slotted Nut $\frac{3}{8}$	F2877	8
Cotter $\frac{3}{8} \times 1$	F1882	8
Machine Bolt $\frac{1}{8} \times 4$ (front safety rail to frame)	F1601	2
Nut $\frac{1}{8}$	F1114	2

BOLTS—NUTS—WASHERS—SCREWS

These items are grouped, and listed by size for convenience in ordering. All bolt and nut threads are U. S. standard, unless otherwise specified.

MACHINE BOLTS

F1489	$\frac{1}{8}$ x $\frac{3}{4}$
F1099	$\frac{1}{8}$ x 1
F1113	$\frac{1}{8}$ x 1 $\frac{1}{4}$
F1122	$\frac{1}{8}$ x 1 $\frac{1}{2}$
F1570	$\frac{1}{8}$ x 1 $\frac{3}{4}$
F1601	$\frac{1}{8}$ x 4
F2887	$\frac{3}{8}$ x $\frac{3}{4}$
F1159	$\frac{3}{8}$ x 1
F1318	$\frac{3}{8}$ x 1 $\frac{1}{4}$
F1024	$\frac{3}{8}$ x 1 $\frac{1}{2}$
F1640	$\frac{3}{8}$ x 2
F2760	$\frac{3}{8}$ x 2 $\frac{1}{4}$
F1511	$\frac{3}{8}$ x 3 $\frac{1}{2}$
F2721	$\frac{3}{8}$ x 3 $\frac{3}{4}$
F2690	$\frac{3}{8}$ x 4 $\frac{1}{2}$
F1428	$\frac{1}{2}$ x 1 $\frac{1}{2}$

CARRIAGE AND STEP BOLTS

F2906	$\frac{1}{4}$ x $\frac{3}{4}$ Step
F2610	$\frac{1}{4}$ x $\frac{7}{8}$ Step
F4258	$\frac{1}{4}$ x 4 $\frac{1}{4}$
F3021	$\frac{1}{4}$ x 8 Step
F2872	$\frac{1}{2}$ x 1 Step
F1118	$\frac{1}{2}$ x 1 $\frac{1}{2}$
F1101	$\frac{1}{2}$ x 2
F1108	$\frac{1}{2}$ x 2 $\frac{1}{2}$
F3076	$\frac{1}{2}$ x 3 $\frac{3}{4}$
F1867	$\frac{1}{2}$ x 4

STOVE BOLTS

F3069	$\frac{1}{4}$ x 1 Flat Hd.
F1627	$\frac{1}{4}$ x 1 Rd. Hd.
F1685	$\frac{1}{4}$ x 1 $\frac{1}{2}$ Rd. Hd.

NUTS

F3570	No. 2-56 Hex
F1011	No. 12-24 Hex
F2712	$\frac{1}{4}$ Stove Bolt
F2368	$\frac{1}{4}$ Hex Half
F1033	$\frac{1}{4}$ Hex
F2723	$\frac{1}{4}$ Hex Slotted
F2700	$\frac{1}{4}$ Square
F1053	$\frac{1}{4}$ Wing
F1451	$\frac{1}{8}$ Hex
F3115	$\frac{1}{8}$ Hex S. A. E.
F1114	$\frac{1}{8}$ Square
F1040	$\frac{3}{8}$ Hex Half
F1000	$\frac{3}{8}$ Hex
F2877	$\frac{3}{8}$ Hex Slotted
F1029	$\frac{7}{8}$ Hex
F2737	$\frac{1}{2}$ Hex Half
F1702	$\frac{1}{2}$ Hex S. A. E. Castle

WASHERS

F1050	$\frac{1}{8}$ Wrot.
F1065	$\frac{1}{4}$ Lock-positive type
F1106	$\frac{1}{4}$ Wrot
F1100	$\frac{1}{8}$ Lock-positive type
F2442	$\frac{1}{8}$ Lock-special
F1362	$\frac{1}{8}$ Wrot
F3071	$\frac{1}{8}$ Square Grip
F1025	$\frac{3}{8}$ Lock-positive type
F2346	$\frac{3}{8}$ Lock
F1115	$\frac{3}{8}$ Wrot
F4160	$\frac{1}{2}$ Lock
F1075	$\frac{1}{2}$ Lock-positive type
F1267	$\frac{1}{2}$ Wrot
F1121	$\frac{5}{8}$ Wrot

SCREWS

F2634	2-56 x $\frac{3}{4}$ Rd. Hd. Machine
F2580	10-24 x $\frac{3}{8}$ Rd. Hd. Machine
F1012	12-24 x $\frac{3}{8}$ Rd. Hd. Machine
F1008	12-24 x $\frac{3}{4}$ Rd. Hd. Machine
F1903	14-20 x $\frac{1}{2}$ Rd. Hd. Machine
F3067	$\frac{1}{4}$ x $\frac{5}{8}$ Hex Hd. Cap
F3605	$\frac{1}{4}$ x $\frac{3}{4}$ Rd. Hd. Cap
F1064	$\frac{1}{4}$ x $\frac{3}{4}$ Hex Hd. Cap
F2608	$\frac{1}{4}$ x 1 $\frac{1}{2}$ Hex Hd. Cap
F1009	$\frac{1}{4}$ x $\frac{3}{4}$ Fillister Head
F1713	$\frac{1}{2}$ x 1 $\frac{1}{4}$ Hex Hd. Cap
F1125	$\frac{3}{8}$ x 1 $\frac{1}{4}$ Hex Hd. Cap
F2438	$\frac{3}{8}$ x 1 $\frac{1}{2}$ Fillister Head
F1112	$\frac{3}{8}$ x 1 $\frac{1}{2}$ Flat Hd. Cap
F1082	No. 6 x $\frac{3}{4}$ Flat Hd. Wood
F1387	No. 9 x $\frac{5}{8}$ Rd. Hd. Wood
F2431	No. 9 x 1 Flat Hd. Wood

COTTERS

F1450	$\frac{1}{8}$ x $\frac{3}{4}$
F1027	$\frac{1}{8}$ x $\frac{1}{2}$
F1076	$\frac{1}{8}$ x $\frac{3}{4}$
F1882	$\frac{1}{8}$ x 1
F1030	$\frac{1}{8}$ x $\frac{3}{4}$
F1104	$\frac{1}{8}$ x 1
F2931	$\frac{1}{8}$ x 1 $\frac{1}{2}$
F2866	$\frac{1}{8}$ x 1
F1094	$\frac{1}{8}$ x 1 $\frac{1}{4}$
F2999	$\frac{1}{4}$ x 1

MISCELLANEOUS

F3054	Lock Wire
F2035	$\frac{1}{8}$ Pipe Plug
F1013	Escutcheon Pin
F1048	No. 5 x 1 $\frac{1}{4}$ Taper Pin
F2912	No. 5 x 1 $\frac{3}{4}$ Taper Pin
F1793	$\frac{1}{8}$ x $\frac{1}{4}$ Rivet
F1799	$\frac{1}{4}$ x $\frac{1}{2}$ Rivet