



# Tarheel Telegrapher



Volume 50 — Issue 12

Editor: R.T.Crowley - NCRM.NHVRV@GMAIL.COM

1 December 2012

## Ho... Ho... Ho... THE SANTA TRAINS ARE HERE AGAIN!

That time of year has come around once again! (We thought we would remind you in case you had not noticed.) That means just **ONE** thing at the *New Hope Valley Railway*, it is time to run the *Santa Trains!*



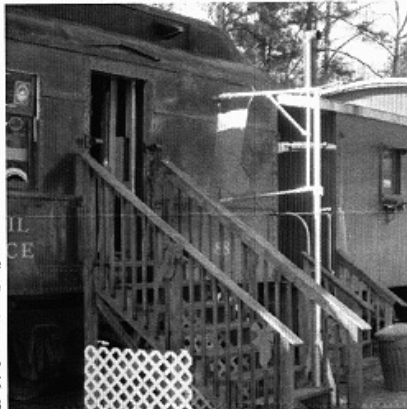
Santa himself will be with us aboard the trains on both Saturdays and Sundays the first two weekends in December (the 1st, 2nd, 8th, and 9th).

As you can see from the photos here, our NCRM "elves" have been hard at work already getting things ready for Santa's yearly visit with decorations hung all around and on the train, our locomotives, and our cars. (Note the odd mail sack hanging from the mail crane by the RPO. Is that USPS approved?)

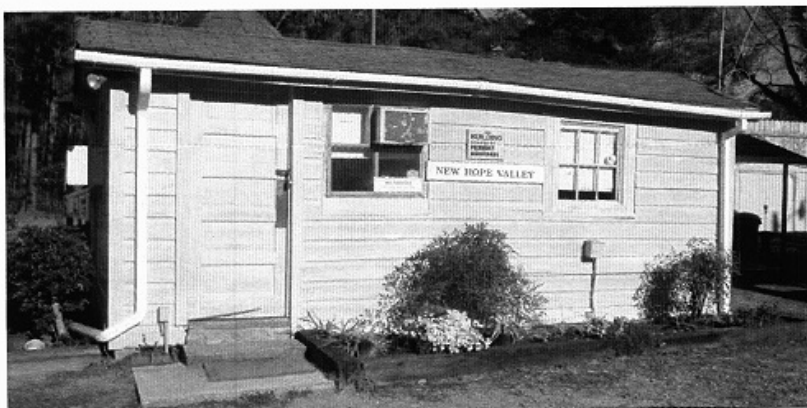
Approved or not, we are sure it will get a lot of use as we send off our letters to the

North Pole, hoping to find the latest offering from Lionel or General Electric waiting under the tree Christmas morning.

Now the only way to properly appreciate these decorations is to come out to Bonsal yourself to see them. We hope you will be one of the volunteers working the train or helping Santa in some other way. Even if you cannot do that, however, we still want to see you and your family with us at some point in this holiday season. After all, family is one of the most important parts of all the festivities, and you are a part of the NCRM family.



Oh, and while not technically part of the official holiday decorations, we thought we should show you the new paint on the old Yard Office Building. (below) The historic structure looks pretty good now. Come out to Bonsal and see for yourself!



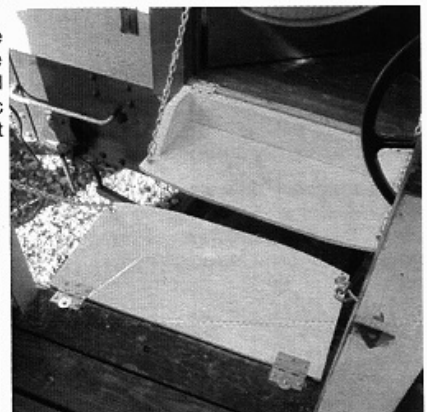
## AMTRAK OPERATES LINCOLN SERVICE TRAINS AT 110 MPH IN ILLINOIS

### *Progressive Railroad*

Amtrak began providing 110 mph rail service on a fifteen mile segment in Illinois along the Chicago-St. Louis corridor on 22 November 2012. The faster train represented a "historic step" toward establishing a high-speed rail network in Illinois. On Thanksgiving Day, Amtrak Lincoln Service trains started operating at 110 mph between Dwight and Pontiac, IL. Other Amtrak trains on the Chicago-St. Louis corridor will continue to operate at a top speed of 79 mph, including Texas Eagle route trains. "Regular operations at 110 mph on six daily Amtrak Lincoln Service trains are a major milestone in the development of our Chicago Hub network," said Amtrak President and Chief Executive Officer Joseph Boardman. "Combined with our high-speed trains in Michigan, this means Amtrak now has a total of 14 daily trains to and from Chicago that operate at 110 mph."

### SAFETY FOR SANTA

Considering his immense age, Santa is quite spry, especially when transferring between cars as our *Santa Trains* make their way up and down the *New Hope Valley Railway*. Of course, we stop the train while each transfer between cars is made, but now we added just a bit more to keep the *old boy*, his helpers, and our crews safe.



Those are new safety steps between each of our cars to make the passage a lot easier. After all, we want Santa in good shape to come down our chimneys laden with toys later in the month.

**WINTER GARDENING**

We always seem to be telling you we have jobs for everyone at all times of the year, and below is a photo of one of them.



While gardening in the winter may seem incongruous to some, any avid gardener knows how necessary a job it is. Here is another place you can help.

**STONE MOUNTAIN RAILROAD #110**

Why would we be running a photo of locomotive #110 on the *Stone Mountain Railroad* in Georgia? Well, the locomotive used to operate on a line right here in North Carolina (Do you know which one?) but that is not the only reason for the photo to be here.



We are going to let you think about this for a while before we tell you the other reason for the photo. We should have more about this for you in a month or so.

**REBUILDING BUILDINGS**

You saw the photo of the new paint on the Yard Office on the previous page, so now we have to assure you we did not just paint over the old boards, trusting to that layer of pain to hold things together for the next fifty-odd years.



A lot of work went into repairs of the siding and other parts of the structure before the pain was applied. You can see one of our hard-working volunteers in the midst of that task in the photo above.

**NCRM ANNUAL DINNER****Mark Your Calendar**

Saturday - 19 January 2013

Time to get ready for still another special event in the NCRM and NHVRy calendar of events! The *Annual Dinner* (actually lunch) will be held:

Saturday

19 January 2013

11:00am to 3:00pm

The Loft

Anna's Restaurant

100 North Salem Street

Apex, NC 27502

Cost: \$12.00 per person

We will have a full and formal announcement sent to you along with the next (January) issue of the *Tarheel Telegrapher*. The cost shown is to cover lunch.

This will be another in our series of gatherings each year when we can just enjoy each other's company. Highlights of the day will include the usual informational sessions from our officers and department heads, induction of the next two members of the *Order of the Rusty Spike*, and a special guest speaker. We hope to see as many of you as possible at this important event. You never know who might show up!

**NCDOT PUBLIC HEARING ON PROPOSED GRADE SEPARATION****Progressive Railroading**

The NCDOT plans to hold an informal public design hearing 11 December on proposed improvements to CSX Transportation's and Norfolk Southern Railway's mainlines in Charlotte. The proposed project involves the construction of a grade separation along a 1.5 mile segment of CSX and NS tracks, and the closure of the North Church Street grade crossing. "The project is designed to enhance safety and reduce noise, emissions and energy use while improving rail operations by increasing efficiency for freight and passenger rail," NCDOT officials said. Known as the Charlotte Mainline Grade Separation, the project will require the purchase of additional right of way in the area and the relocation of businesses, they said.

**AMTRAK INSTALLS HANSON AS****POLICE CHIEF****Progressive Railroading**

Amtrak has named Polly Hanson chief of police. She will lead the Amtrak Police Department's more than 500 law enforcement officers and civilians across the country working with local, state and federal agencies to ensure riders' safety and security. Hanson most recently was director of the Office of Law Enforcement and Security at the US Department of Interior. Her law enforcement career includes 27 years at the Washington Metropolitan Area Transit Authority's police department, where she rose through the ranks from police officer to chief of police. She also spent three years with the Metropolitan Police Department in Washington, DC, as executive director of the Strategic Services Bureau. Hanson will begin her new duties on 17 December and report to Amtrak President and Chief Executive Officer Joseph Boardman. Meanwhile, last week the Amtrak Police Department was awarded law enforcement accreditation by the Commission on Accreditation for Law Enforcement Agencies. To achieve accreditation, the department had to demonstrate compliance with several hundred professional standards.



## The Call Board NHVRy Crew Operating News

### TRAINING CLASSES

All members of the train operating crew will be required to attend one day of training. Next training will be listed in the Schedule below.

### RULES QUALIFICATION TESTS

Rules tests must be renewed every two years in order to remain current. If you have not taken a rules test in the last two years, see the dispatcher on duty as soon as possible.

### BULLETIN BOOK

The Bulletin Book is in the Yard Office at Bonsal. All crew members are required to be aware of bulletins posted in the Book.

### NCDOT CHOOSES HINES GROUP AS GATEWAY STATION MASTER DEVELOPER

*Progressive Railroadng*

NCDOT has selected the Hines Group to serve as the master developer for the future Gateway Station district development in uptown Charlotte. The Atlanta-based developer was among four respondents submitting statements of qualifications. The next step in the project will involve officials from NCDOT, the City of Charlotte, Mecklenburg County, and other local stakeholders entering into a pre-development agreement with Hines to begin initial stages of creating a master development plan. An "extensive process" of stakeholder and community input will be part of that process, NCDOT officials said. "The creation of the master development plan is expected to generate numerous opportunities for planners, engineers, architects, contractors and other developers to become part of the project as it moves through planning, design and implementation," they said. To cost an estimated \$200 million, Gateway Station will be a multi-modal transit center that will anchor transit-oriented and mixed-use development on twenty acres in uptown Charlotte, near Bank of America Stadium. The center will serve as the central hub for Amtrak, Greyhound, Charlotte Area Transit System, streetcar, and bus services.

### CROSSING IMPROVEMENTS ADVANCE

*Progressive Railroadng*

NCDOT Rail Division completed safety improvements at two crossings near Norwood. Crews installed crossing signals and gates at the intersection of Mt. Zion Road and Winston Salem Southbound Railroad's (WSS) tracks, and the intersection of Cottonville Road and WSS tracks. Ninety percent of the cost for both was covered by federal dollars, with the state providing the remainder. WSS and the state will split all maintenance costs.

### HURRICANE SANDY UPDATE

*Progressive Railroadng*

New Jersey Transit will receive \$25 million in expedited funding from the Federal Transit Administration (FTA) to help the agency restore more commuter-rail service shut down by Hurricane Sandy, Senators Frank Lautenberg (D-NJ) and Robert Menendez (D-NJ) announced. The funding, from the Surface Transportation Program, normally would have taken up to 30 days to get to the state. But, by "fast tracking it," the funds arrived in four days. The \$25 million in surface transportation funding was already owed to NJ Transit, but by expediting it, the agency will have access to it a month earlier. The Surface Transportation Program provides flexible funding able to be used by states and local communities for transit, highway or bridge projects. The \$25 million is "only the beginning" of the resources New Jersey will need to rebuild its transportation system. The senators and other federal officials "remain committed to cutting any red tape necessary to speed our recovery." "NJ Transit is suffering from enormous new costs to restore service, while at the same time seeing decreases in revenues, so this funding is critical in helping them get through this cash crunch," said Menendez.

### TEAMSTERS ANNOUNCEMENT

*BLET Website*

The International Brotherhood of Teamsters has issued an Action Alert asking members to urge their Members of Congress to vote "no" on extending the Bush-era tax cuts. The alert urged, "Congress is back in Washington after the election for a 'lame-duck' session with possible devastating impact on the future of working families. We need more economic security, not less. But some legislators are set on reaching a 'grand bargain' to cut the benefits we depend on. They want to cut our Social Security benefits, raise the retirement age for Social Security and Medicare, and cut Medicaid, forcing families into bankruptcy when a loved one needs long-term care. Why? All to pay for outrageous tax breaks for the richest 2% of Americans. That's not what we voted for on November 6. Take a stand and tell our representatives to put working families first. Call Your Members of Congress NOW at 888-659-9401. Tell them no more tax cuts for the richest 2% of Americans and no benefit cuts to Social Security, Medicare, or Medicaid."

### WHERE ARE YOU?

Please ensure we have your correct address, telephone number, and **EMAIL address**, at all times. Send a note to the email address on the first page of this publication.

### FREIGHT RAILROADS POST STORM

*Progressive Railroadng*

Freight railroads operating in the Northeast continue to post progress in their post-Hurricane Sandy recovery efforts. CSX has lifted embargoes on all traffic to all locations and CSX Intermodal has reopened all terminals. Norfolk Southern Railway has resumed operations in areas deemed safe. One of the first back in service, the New York, Susquehanna and Western Railway resumed normal operations in its New Jersey division, with some limited exceptions.



### NCRM 2012 SCHEDULE

- 1 December - NHVRy Santa Trains
- 2 December - NHVRy Santa Trains
- 8 December - NHVRy Santa Trains
- 9 December - NHVRy Santa Trains
- 20 December - NCRM Board Meeting

### NCRM 2013 SCHEDULE

- 17 January - NCRM Board Meeting
  - 19 January - NCRM Annual Dinner
  - 21 February - NCRM Board Meeting
  - 21 March - NCRM Board Meeting
  - 7 April - NC Science Festival
  - 18 April - NCRM Board Meeting
  - 19 April - NHVRy Group Day
  - 5 May - NHVRy Operating Day
  - 16 May - NCRM Board Meeting
  - 17 May - NHVRy Group Day
  - 2 June - NHVRy Operating Day
  - 20 June - NCRM Board Meeting
  - 21 June - NHVRy Group Day
  - 7 July - NHVRy Operating Day
  - 18 July - NCRM Board Meeting
  - 19 July - NHVRy Group Day
  - 4 August - NHVRy Operating Day
  - 15 August - NCRM Board Meeting
  - 16 August - NHVRy Group Day
  - 1 September - NHVRy Operating Day
  - 19 September - NCRM Board Meeting
  - 20 September - NHVRy Group Day
  - 6 October - NHVRy Operating Day
  - 17 October - NCRM Board Meeting
  - 18 October - NHVRy Group Day
  - 19 October - NHVRy Halloween Trains
  - 26 October - NHVRy Halloween Trains
  - 15 November - NHVRy Group Day
  - 21 November - NCRM Board Meeting
  - 7 December - NHVRy Santa Trains
  - 8 December - NHVRy Santa Trains
  - 14 December - NHVRy Santa Trains
  - 15 December - NHVRy Santa Trains
  - 19 December - NCRM Board Meeting
- All events listed here are held at the NHVRy in Bonsal, NC unless otherwise noted.

NORTH CAROLINA RAILWAY MUSEUM, INC.

# NHV

*New Hope Valley Railway*

## *Tarheel Telegrapher*

Published by the North Carolina Railway Museum, Inc.  
operating the historic *New Hope Valley Railway*.

Post Office Box 40, New Hill, NC 27562

Phone: 1-919-362-5416

Email: [NHVRY@MINDSPRING.COM](mailto:NHVRY@MINDSPRING.COM)

Web: [WWW.NHVRY.ORG](http://WWW.NHVRY.ORG)

Published twelve times per year. Subscription is included with membership.

Copyright © 2012 - North Carolina Railway Museum, Inc.

The opinions expressed herein are not necessarily those of the North Carolina Railway Museum, Inc. Submissions are always welcomed, along with accompanying photographs. Articles appearing in the *Tarheel Telegrapher* may be reprinted in whole or in part under fair use with proper credit given to the source.

The East Carolina Chapter, NRHS, a division of the North Carolina Railway Museum, Inc., is a separate and distinct entity from the National Railway Historical Society, Inc., a Maryland not-for-profit corporation.

**OFFICERS:**

President: Michael S. MacLean  
Vice President: William L. Brooks  
Treasurer: John F. Morck  
Secretary: John Horn

**BOARD OF DIRECTORS:**

Chris Boli  
William L. Brooks  
R.T. Crowley  
Roger Koss  
Michael S. MacLean  
Robert Middour  
John F. Morck  
Will Sadler  
Scott Smith

**ECC-NRHS NATIONAL DIRECTOR:**

Open

**MARKETING:**

Temporarily Open

**MEMBERSHIP:**

Robert Middour  
Luke Sullivan

**SUPERINTENDENT, G SCALE:**

Chris Siegl

**NRHS CHAPTER HISTORIAN:**

Mary J. Barham

**ARTIST EMERITUS:**

Deborah Senchak

**ARTIST-IN-RESIDENCE:**

Brenda Priest