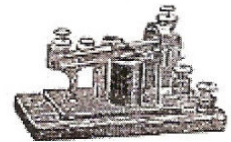


Tarheel Telegrapher



Volume 51 — Issue 5

Editor: R.T.Crowley - NCRM.NHVRY@GMAIL.COM

1 May 2013

NC GOVERNOR MCCRORY PROPOSES TRANSPORTATION FUNDING PLAN

Progressive Railroading

Governor Pat McCrory has introduced a transportation funding plan in an effort to accelerate investment in the state's infrastructure and generate economic growth. The "strategic mobility formula" was designed to enable the NCDOT to use existing funds more efficiently to significantly increase projects better connecting economic regions. Department officials estimate the formula would fund at least 260 projects and create more than 240,000 jobs over the next 10 years. The formula adopts a tiered approach aligning available funding with the state's greatest transportation priorities. Under the formula, 40% of funding over the 10 years would be allocated to the statewide level; 40% allocated to the regional level; and 20% allocated to the division level.

"With our population growing rapidly and transportation revenues continuing to decline, we have to be efficient and strategic in the way we fund, distribute and prioritize projects that are aligned with commerce," NCDOT Secretary Tony Tata said. "The strategic mobility formula increases our ability to have the highest impact and address the greatest needs." NCDOT officials are working with the state Department of Commerce to invest in infrastructure, he said.

"Making impactful change requires strong collaboration," McCrory said. "Government agencies working in silos doesn't work." Several lawmakers plan to propose legislation for the strategic mobility formula this session.

AMTRAK WORKERS RATIFY FIVE-YEAR CONTRACT

Progressive Railroading

Amtrak employees represented by the SMART Transportation Division have ratified a five-year agreement with the railroad covering 2,300 conductors, assistant conductors, yardmasters, and dining car stewards. The agreement is retroactive to 2010 and includes new rates of pay to become effective within thirty to forty-five days. Payment of retroactive wages will be made about sixty days after the wage rates take effect. The agreement was passed by nearly 60% of eligible train-service members voting and by 86% of eligible yardmasters.

WORLEY TAKES HELM OF NCDOT RAIL DIVISION

Progressive Railroading

The North Carolina Department of Transportation (NCDOT) recently named Paul Worley director of the rail division. The division's longest-serving employee, Worley has served NCDOT for twenty-five years, most recently as the division's acting director. He will be responsible for day-to-day operations and collaborating with railroads on safety oversight, strategic planning and improvements concerning the state's 3,300-mile rail system. The rail division is investing more than a half billion dollars in federal funds to modernize the state's rail corridor between Charlotte and Raleigh. The division also operates two state-supported trains and oversees grade crossing safety. "Paul brings a depth of experience and proven leadership that will strengthen North Carolina's reputation for safety and building railroads as we continue expanding and modernizing the state's railroad system," said NCDOT Deputy Secretary for Transit Richard Walls.

PAINTING MUSEUM SIGNS

We may be a lot of things, but first and foremost, we are the *North Carolina Railway Museum*. As a museum, we have a mandate to interpret our exhibits for our visitors as part of our overall program of



education. Above one of our volunteers performs necessary maintenance on one of the many interpretive signs we have placed around the property. We always ask for help but if you do not paint, would you consider doing some research to make such signs more informative?

ROYAL CANADIAN MOUNTED POLICE FOIL TERRORIST PLOT TO DERAIL VIA TRAIN IN CANADA

Progressive Railroading

On 22 April 2013, the Royal Canadian Mounted Police arrested two people and charged them with conspiring to carry out a terrorist attack on a VIA Rail Canada passenger train in Toronto. RCMP officials identified the accused as Chiheb Esseghaier and Raed Jaser, of the Montreal and Toronto area. Charges include conspiring "to carry out an attack against, and consorting to murder persons unknown for the benefit of, at the direction of, or in association with a terrorist group."

In a press conference, RCMP officials said the plot was supported by al-Qaeda elements based in Iran. Although police did not identify the exact route, the Reuters news agency attributed to US government sources the plot targeted a rail line between New York and Toronto. The investigation was conducted in collaboration with other law enforcement entities, including the US Federal Bureau of Investigation.

VIA Rail officials released the following statement: "Thanks to an unprecedented cooperation between law enforcement and the security units of various departments, VIA Rail and CN, at no time was there an imminent threat to the VIA Rail passengers, employees or the general public. We cooperate with all involved in ensuring the safety and security of our passengers, our employees and the public. We do not comment on law enforcement activities. We acknowledge the work and dedication of the agencies involved."

OBAMA NOMINATES CHARLOTTE MAYOR FOX AS TRANSPORTATION SECRETARY

Progressive Railroading

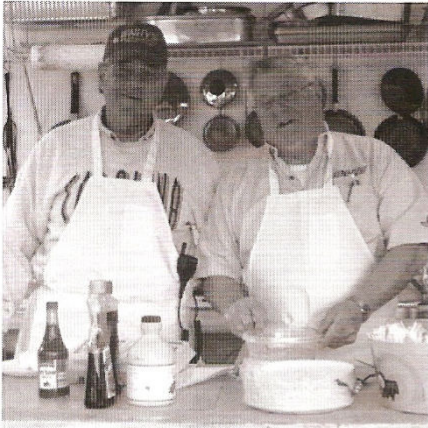
President Obama has nominated Anthony Foxx, mayor of Charlotte, NC, as the next transportation secretary. As Charlotte's mayor since 2009, Foxx has overseen several major infrastructure projects in the city. He rose to national prominence after bringing the Democratic Party's national convention to Charlotte in 2012. If approved by the Senate, Foxx will succeed US Transportation Secretary Ray LaHood.



OUR COOKS

Two of our members (shown below) were gracious enough to prepare breakfast for those serving as part of the crew for the NC Science Fair visit on 7 April 2013.

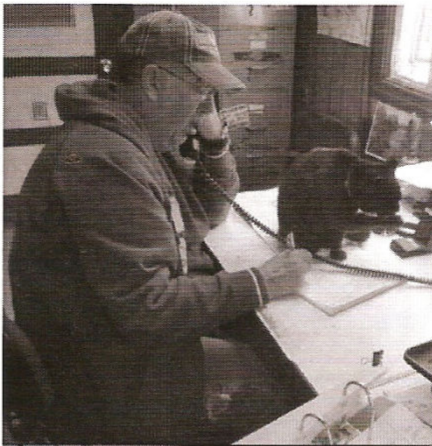
We have not heard any comments (yet)



on the quality of the breakfast, but those two sure look like they might know what they are doing. Thanks, guys!

BANANA PUDDING ICE CREAM

Take a look at the photograph to the right of this story. The farms at NC State University seem to have taken an iconic North Carolina staple food and turned it into an ice cream! We are heartily in favor of this and applaud the effort. Good job NCSU! That big tub of frosty goodness appeared on the menu for crews at Bonsal recently, so we will have to rely on them to critique the flavor. However, we wonder if this will set a trend for other North Carolina specialties. For example, could one make Barbecue Ice Cream?



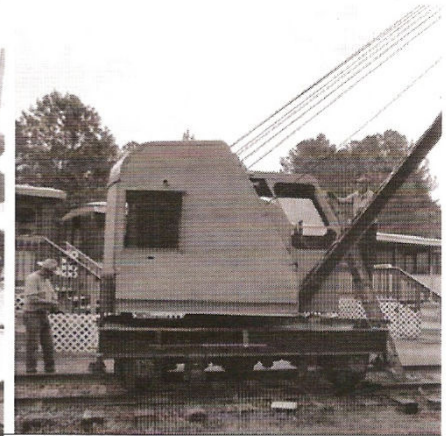
ASSISTANT DISPATCHER

From what we see in the photo below, we may have to create a new position in the NHVRy Rule Book for an Assistant Dispatcher. That is Midnight, our depot cat, up on the desk and licking her paws or working the radio. Either way we are sure she is a big help around the office.



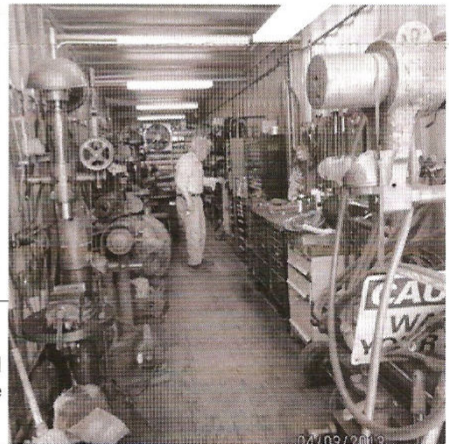
NEW PAINT ON THE BORO CRANE

Our ex-Aberdeen & Rockfish boro crane is looking spiffy these days with a new coat of paint. This is one piece of equipment getting much more use than most of us realize. Our crews could not do without it.



MACHINE SHOP

How many of you knew we had a machine shop as extensive as the one pictured below at Bonsal? All of the equipment we display and/or operate is at least fifty (50) years old so if something breaks, we

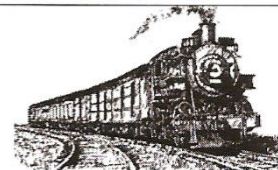


NC SCIENCE FESTIVAL AT BONSAI

Attendees at the NC Science Festival and year this event has included the NCRM line up for a demonstration of steam power and NHVRy as part of its itinerary. We at Bonsal on 7 April 2013. This is the second year hope they will be back next year too.



cannot go to the "Railroad Parts Store" for a new one and Ace Hardware only carries a few of the items we need. Often, we have to make a new part right at Bonsal, or at least remanufacture the old one. Sometimes we do not have the time to run out to get a needed item. That all requires a machine shop on the property. This can be a very busy place at times and a noisy place as well.



The Call Board

NHVRy Crew Operating News

TRAINING CLASSES

All members of the train operating crew will be required to attend one day of training. Next training will be listed in the Schedule below.

RULES QUALIFICATION TESTS

Rules tests must be renewed every two years in order to remain current. If you have not taken a rules test in the last two years, see the dispatcher on duty as soon as possible.

BULLETIN BOOK

The Bulletin Book is in the Yard Office at Bonsal. All crew members are required to be aware of bulletins posted in the Book.

AMTRAK RAMPED UP RIDERSHIP IN FIRST-HALF OF FY2013

Progressive Railroad

Amtrak boosted ridership 0.9% in the first half of fiscal-year 2013 and set a passenger-count record in March. In addition, the national intercity passenger railroad set monthly ridership records in October, December, and January during the fiscal year's first half, running from October through March. The railroad increased ridership despite service disruptions caused by Hurricane Sandy in late October. In all, 26 of 45 routes posted ridership gains during the fiscal year's first half.

The Northeast Corridor's ridership, reflecting a "significant hit" from Sandy, declined 1.2%. Nevertheless, the corridor is "seeing a solid recovery" and is predicted to post ridership gains for the full fiscal year, Amtrak officials said. Ridership on state-supported and other short-distance routes climbed 2.7%, while long-distance ridership rose 0.5%. The railroad expects to end its fiscal year at or above last year's annual record of 31.2 million riders.

"The continued ridership growth on routes across the country reinforces the need for dedicated, multi-year federal operating capital funding to support existing intercity passenger rail services and the development of new ones," said President and Chief Executive Officer Joseph Boardman.

SC PORT UPS CONTAINER VOLUME

Progressive Railroad

The Port of Charleston is registering its strongest fiscal year for container volume in five years says the South Carolina Ports Authority. During the first nine months of its fiscal year, beginning 1 July 2012, the port handled 1,160,999 TEUs, up 10%. In March, the port handled 136,877 TEUs, up 1.5% versus March 2012 and 13.8% versus March 2011.

AMTRAK SEEKS MORE FEDERAL CAPITAL FUNDS FOR INFRASTRUCTURE, BUT LESS OPERATING SUPPORT FOR FY2014

Progressive Railroad

In its fiscal-year 2014 funding request to Congress, Amtrak is emphasizing the need for federal funds to improve and expand intercity passenger-rail service, but requesting less federal operating support. Amtrak is seeking \$373 million in federal operating support for FY2014, or about 17% less than it requested a year ago. The lower dollar figure was made possible by an improved financial position last fiscal year during which Amtrak covered 88% of its operating costs with ticket sales and other nonfederal revenue sources, up from 85% in the prior year. In addition, if current service levels are maintained, Amtrak's state revenue in FY2014 should increase

by \$85 million, as the railroad and states implement a congressional requirement on cost allocation for short distance routes.

Amtrak also is requesting \$2 billion in federal capital funding to maintain the Northeast Corridor and other Amtrak-owned or maintained infrastructure and equipment; advance the Gateway program to expand track, tunnel and station capacity between Newark and New York Penn Station; acquire new equipment; and improve accessibility for passengers and disabilities. Furthermore, Amtrak requested \$212 million for debt service. "If we truly want to realize our vision of what rail can offer America, in terms of real mobility improvements and rational modal choices, policy decisions must be made and funding provided to match them," said Amtrak President and Chief Executive Officer Joseph Boardman. "These are big decisions, and will require bold thinking, but they will deliver value for the money." He noted that Amtrak ridership, revenue, on-time performance and other leading indicators are reaching record levels or registering improvements.

WHERE ARE YOU?

Please ensure we have your correct address, telephone number, and [EMAIL address](#), at all times. Send a note to the email address on the first page of this publication.

NCRM 2013 SCHEDULE

5 May	- NHVRy Operating Day
16 May	- NCRM Board Meeting
17 May	- NHVRy Group Day
2 June	- NHVRy Operating Day
20 June	- NCRM Board Meeting
21 June	- NHVRy Group Day
7 July	- NHVRy Operating Day
18 July	- NCRM Board Meeting
19 July	- NHVRy Group Day
20 July	- NCRM Member Meeting
4 August	- NHVRy Operating Day
15 August	- NCRM Board Meeting
16 August	- NHVRy Group Day
1 September	- NHVRy Operating Day
19 September	- NCRM Board Meeting
20 September	- NHVRy Group Day
6 October	- NHVRy Operating Day
12 October	- NCRM Member Meeting
17 October	- NCRM Board Meeting
18 October	- NHVRy Group Day
19 October	- NHVRy Halloween Trains
26 October	- NHVRy Halloween Trains
15 November	- NHVRy Group Day
21 November	- NCRM Board Meeting
7 December	- NHVRy Santa Trains
8 December	- NHVRy Santa Trains
14 December	- NHVRy Santa Trains
15 December	- NHVRy Santa Trains
19 December	- NCRM Board Meeting

All events listed here are held at the NHVRy in Bonsal, NC unless otherwise noted.

HOUSE TRANSPORTATION COMMITTEE CREATES FREIGHT-FOCUSED PANEL

Progressive Railroad

House Committee on Transportation and Infrastructure Chairman Bill Shuster (R-PA) and Ranking Member Nick Rahall (D-WV) appointed a new panel charged with examining US freight transportation and how improving it could strengthen the nation's economy. Rep. John Duncan, Jr. (R-TN), the committee's vice chair, will chair the group, dubbed the Panel on 21st Century Freight Transportation. Rep. Jerrold Nadler (D-NY) will serve as the panel's ranking member. Panel members include Reps. Gary Miller (R-CA), Rick Crawford (R-AR), Richard Hanna (R-NY), Daniel Webster (R-FL), Markwayne Mullin (R-OK), Corrine Brown (D-FL), Daniel Lipinski (D-IL), Albio Sires (D-NJ), and Janice Hahn (D-CA). Members will serve for six months, beginning with the first scheduled hearing on April 24. "Given that freight transportation cuts across many modes, this panel will play a critical role in providing recommendations on how to improve the efficient movement of goods between highways, ports, inland waterways, railroads, air carriers, and pipelines," said Shuster.

NCDOT TO CONDUCT GRADE CROSSING SAFETY BLITZES

Progressive Railroad

The NCDOT plans to hold "crossing safety blitzes" in various locations to heighten motorist awareness. NCDOT partnered with local law enforcement, first responders, and other officials in Fayetteville to conduct the first of these blitzes. During the blitz, department workers handed out thousands of fliers to motorists to provide safety tips. NCDOT plans to conduct other blitzes in May, June and July in Charlotte, Greensboro and Dunn. The number of train-car collisions is unusually this year.

NORTH CAROLINA RAILWAY MUSEUM, INC.

NHV

New Hope Valley Railway

Tarheel Telegrapher

Published by the North Carolina Railway Museum, Inc.
operating the historic *New Hope Valley Railway*.

Post Office Box 40, New Hill, NC 27562

Phone: 1-919-362-5416

Email: NHVRY@MINDSPRING.COM

Web: WWW.NHVRY.ORG

Published twelve times per year. Subscription is included with membership.

Copyright © 2013 - North Carolina Railway Museum, Inc.

The opinions expressed herein are not necessarily those of the North Carolina Railway Museum, Inc. Submissions are always welcomed, along with accompanying photographs. Articles appearing in the *Tarheel Telegrapher* may be reprinted in whole or in part under fair use with proper credit given to the source.

The East Carolina Chapter, NRHS, a division of the North Carolina Railway Museum, Inc., is a separate and distinct entity from the National Railway Historical Society, Inc., a Maryland not-for-profit corporation.

OFFICERS:

President: Michael S. MacLean
Vice President: Open
Treasurer: John F. Morck
Secretary: John Horn

BOARD OF DIRECTORS:

Chris Boli
Open
R.T. Crowley
Roger Koss
Michael S. MacLean
Robert Middour
John F. Morck
Will Sadler
Scott Smith

ECC-NRHS NATIONAL DIRECTOR:

Open

MARKETING:

Brittany Santore

MEMBERSHIP:

Robert Middour
Luke Sullivan

SUPERINTENDENT, G SCALE:

Chris Siegl

NRHS CHAPTER HISTORIAN:

Mary J. Barham

ARTIST EMERITUS:

Deborah Senchak

ARTIST-IN-RESIDENCE:

Brenda Priest