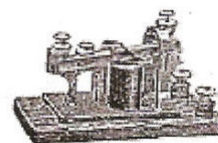


Tarheel Telegrapher



Volume 51 — Issue 3

Editor: R.T.Crowley - NCRM.NHVR@GMAIL.COM

1 March 2013

CLIFFSIDE RAILROAD COMPANY #110 ARRIVES AT BONSAI

Cliffside Railroad Company locomotive #110 has come to Bonsai! Some months ago you may remember seeing a small photo of a steam locomotive this locomotive has returned to North Carolina, the state where it first did service, and is now happily reposing at Bonsai. That gave us an excuse to do a whole issue full of photographs of OUR #110 and some of the other exciting projects happening at Bonsai this winter and spring.



FORMER CLIFFSIDE RAILROAD COMPANY #110 ON THE NHVR AT BONSAI, NC

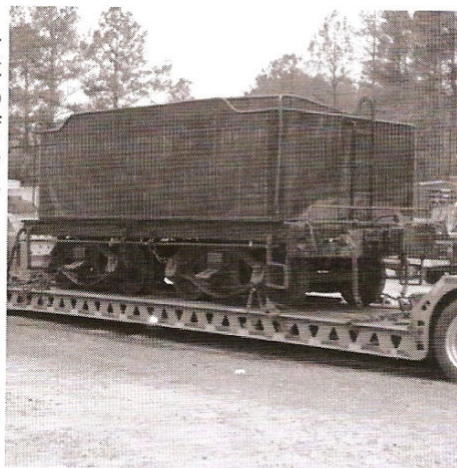


LOCO COMING OFF THE FLATBED

here in the *Tarheel Telegrapher* indicating we had some news to share

The locomotive is a 2-6-2 built in 1927 by the *Vulcan Iron Works* (the same builder as NHV #17) in Wilkes-Barre, PA. The locomotive alone weighs 83,000 and adding the tender, that weight goes up to 103,000 pounds. After her revenue service on the *Cliffside Railroad* in North Carolina, she made her way in hauling people on tourist lines by way of the *Swamp Rabbit Railroad* in *Echo Valley Park* near Cleveland, SC. Then in 1969 she

one of the engines involved in *The Great Locomotive Chase* during the



TENDER COMING OFF THE FLATBED

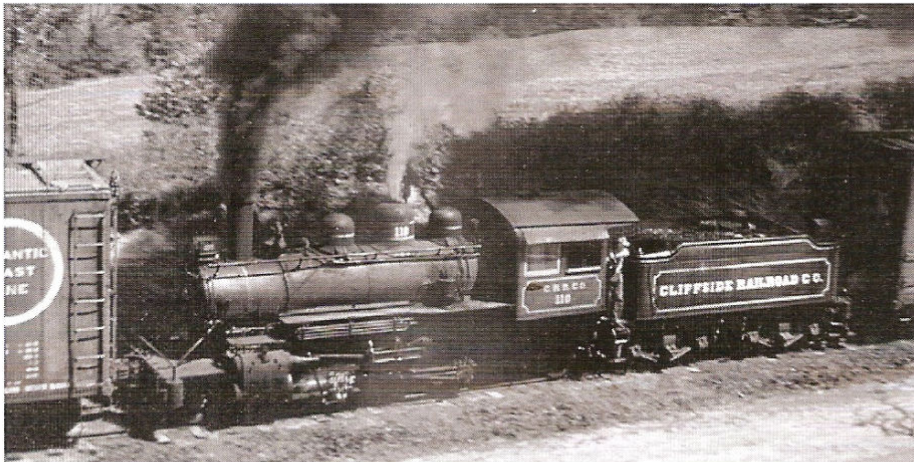
War Between the States.

Our #110 is not in working order at the moment, so do not expect to see

of the main page and information about volunteering can be found on the membership page. Additionally, a press re-

On Saturday, 9 February, we invited everyone to get a first look at the #110, hear about the history of the loco and the move, wanted to see the engine and the tender get coupled, or wanted to learn more about our museum to come to Bonsal.

Cliffside Railroad #110 is now at Bonsal as we evaluate the work needing to be done, raise the money to do it, and get started on what we can do now. If you have not done this already be sure to come out to see it sometime this year, and talk to our Steam Crew about donating to the project or working on it yourself. We are certain they will be very glad to hear from you and answer any questions you have. We are all in this together, so be a real part of YOUR railroad!



#110 OPERATING ON THE CLIFFSIDE RAILROAD

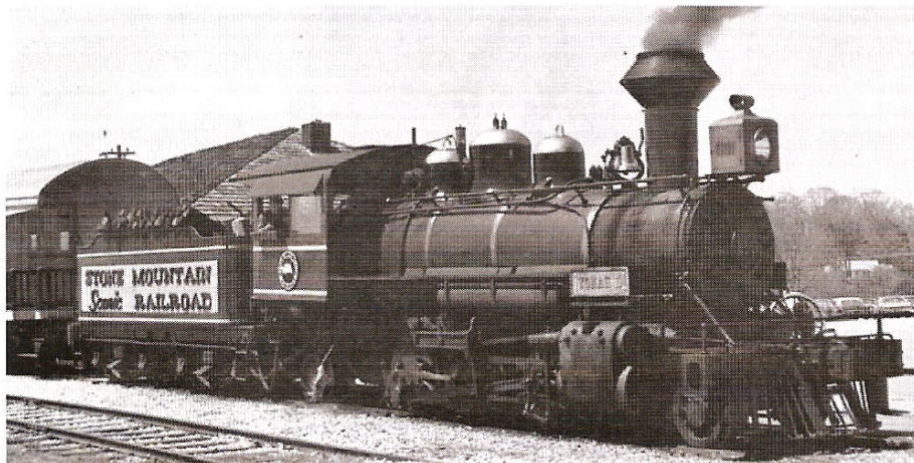
her puffing up and down the NHVRy this season, but plans are afoot to do all we are able to put her back into service as soon as the money to do so becomes available. Donations to this task will be cheerfully accepted.

The locomotive will have to be completely overhauled in order to get it back to operating order. This is anticipated to cost between \$325,000 and \$600,000 (further assessments will have to be made at Bonsal) and funding will have to be raised through donations.

If you are interested in helping us to restore this historical gem, either



#110 OPERATING ON THE SWAMP RABBIT RAILROAD



#110 OPERATING ON THE STONE MOUNTAIN RAILROAD

through volunteering or donations, lease has been added to our website please visit our website. We have on the main page in the "What's Going added a "Donate" button at the bottom Or" square on the right.

THE #110 BULLETIN BOARD

We need to keep everyone informed about our #110 so some of our volunteers have built a special bulletin board near where she will be as we refurbish her.



The Call Board

NHVRy Crew Operating News

TRAINING CLASSES

All members of the train operating crew will be required to attend one day of training. Next training will be listed in the Schedule below.

RULES QUALIFICATION TESTS

Rules tests must be renewed every two years in order to remain current. If you have not taken a rules test in the last two years, see the dispatcher on duty as soon as possible.

BULLETIN BOOK

The Bulletin Book is in the Yard Office at Bonsal. All crew members are required to be aware of bulletins posted in the Book.

THE DEPOT CAT LUNCHES WITH THE CREW



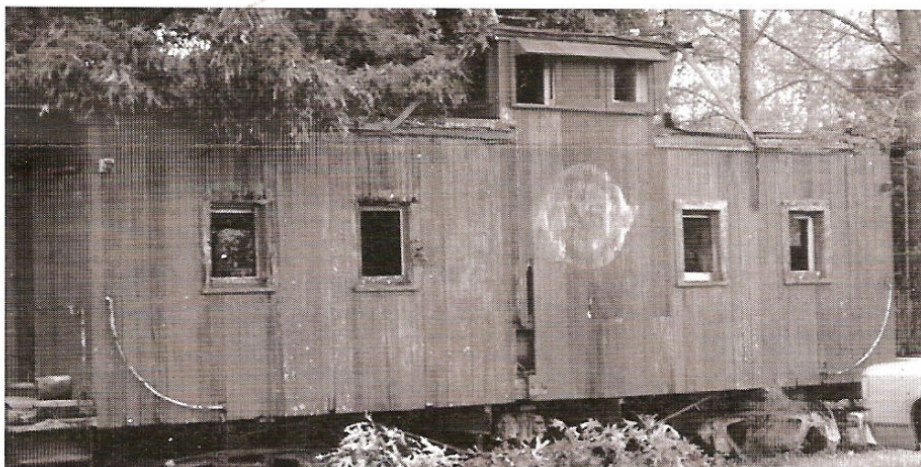
TRACK WORK CONTINUES

Even through all the excitement over Locomotive #110, new paint on NS #335, and dozens of other projects around Bonsal, our track crews (*The Bonsal Athletic Club*) are out there along the right-of-way replacing ties to ensure the next operating season is as safe and enjoyable as ever. These are some of the hardest working volunteers we have and we appreciate that.



NS CABOOSE #335 GETS NEW PAINT

Our NS Caboose #335 has been awaiting new paint and lettering for a long while now, but the wait is finally over. Our crews have completed the job, and she now looks great, resplendent in her original *Norfolk Southern* colors. This is a far cry from when we first saw her deteriorating while parked on a siding near a day care center in Nelson, NC many years ago. Restoration like this is just one of the many things we do at the *North Carolina Railway Museum*, and all of us are a part of that.



NS CABOOSE #335 IN NELSON, NC



NS CABOOSE #335 WITH NEW PAINT AT BONSAI

WHERE ARE YOU?

Please ensure we have your correct address, telephone number, and EMAIL address, at all times. Send a note to the email address on the first page of this publication.

NCRM 2013 SCHEDULE

- 21 March - NCRM Board Meeting
- 7 April - NC Science Festival
- 18 April - NCRM Board Meeting
- 19 April - NHVRy Group Day
- 5 May - NHVRy Operating Day
- 16 May - NCRM Board Meeting
- 17 May - NHVRy Group Day
- 2 June - NHVRy Operating Day
- 20 June - NCRM Board Meeting
- 21 June - NHVRy Group Day
- 7 July - NHVRy Operating Day
- 18 July - NCRM Board Meeting
- 19 July - NHVRy Group Day
- 4 August - NHVRy Operating Day
- 15 August - NCRM Board Meeting
- 16 August - NHVRy Group Day
- 1 September - NHVRy Operating Day
- 19 September - NCRM Board Meeting
- 20 September - NHVRy Group Day
- 6 October - NHVRy Operating Day
- 17 October - NCRM Board Meeting
- 18 October - NHVRy Group Day
- 19 October - NHVRy Halloween Trains
- 26 October - NHVRy Halloween Trains
- 15 November - NHVRy Group Day
- 21 November - NCRM Board Meeting
- 7 December - NHVRy Santa Trains
- 8 December - NHVRy Santa Trains
- 14 December - NHVRy Santa Trains
- 15 December - NHVRy Santa Trains
- 19 December - NCRM Board Meeting

All events listed here are held at the NHVRy in Bonsal, NC unless otherwise noted.

NORTH CAROLINA RAILWAY MUSEUM, INC.

NHV

New Hope Valley Railway

Tarheel Telegrapher

Published by the North Carolina Railway Museum, Inc.
operating the historic *New Hope Valley Railway*.

Post Office Box 40, New Hill, NC 27562

Phone: 1-919-362-5416

Email: NHVRY@MINDSPRING.COM

Web: WWW.NHVRY.ORG

Published twelve times per year. Subscription is included with membership.

Copyright © 2013 - North Carolina Railway Museum, Inc.

The opinions expressed herein are not necessarily those of the North Carolina Railway Museum, Inc. Submissions are always welcomed, along with accompanying photographs. Articles appearing in the *Tarheel Telegrapher* may be reprinted in whole or in part under fair use with proper credit given to the source.

The East Carolina Chapter, NRHS, a division of the North Carolina Railway Museum, Inc., is a separate and distinct entity from the National Railway Historical Society, Inc., a Maryland not-for-profit corporation.

OFFICERS:

President: Michael S. MacLean
Vice President: William L. Brooks
Treasurer: John F. Morck
Secretary: John Horn

BOARD OF DIRECTORS:

Chris Boli
William L. Brooks
R.T. Crowley
Roger Koss
Michael S. MacLean
Robert Middour
John F. Morck
Will Sadler
Scott Smith

ECC-NRHS NATIONAL DIRECTOR:

Open

MARKETING:

Temporarily Open

MEMBERSHIP:

Robert Middour
Luke Sullivan

SUPERINTENDENT, G SCALE:

Chris Siegl

NRHS CHAPTER HISTORIAN:

Mary J. Barham

ARTIST EMERITUS:

Deborah Senchak

ARTIST-IN-RESIDENCE:

Brenda Priest